



XPO6 rabbit pAb

Catalog No	BYab-11643
Isotype	IgG
Reactivity	Human; Mouse
Applications	WB
Gene Name	XPO6 KIAA0370 RANBP20
Protein Name	XPO6
Immunogen	Synthesized peptide derived from human XPO6 AA range: 204-254
Specificity	This antibody detects endogenous levels of XPO6 at Human/Mouse
Formulation	Liquid in PBS containing 50% glycerol, 0.5% BSA and 0.02% sodium azide.
Source	Polyclonal, Rabbit,IgG
Purification	The antibody was affinity-purified from rabbit serum by affinity-chromatography using specific immunogen.
Dilution	WB 1: 500-2000
Concentration	1 mg/ml
Purity	≥90%
Storage Stability	-20°C/1 year
Synonyms	
Observed Band	
Cell Pathway	Nucleus . Cytoplasm . Shuttles between the nucleus and the cytoplasm. .
Tissue Specificity	
Function	function:Mediates the nuclear export of actin and profilin-actin complexes in somatic cells.,similarity:Belongs to the exportin family.,similarity:Contains 1 importin N-terminal domain.,subcellular location:Shuttles between the nucleus and the cytoplasm.,subunit:Found in a complex with XPO6, Ran, ACTB and PFN1. Interacts with ACTB. Interacts with ACTB in a RanGTP-dependent manner.,
Background	The protein encoded by this gene is a member of the importin-beta family. Members of this family are regulated by the GTPase Ran to mediate transport of cargo across the nuclear envelope. This protein has been shown to mediate nuclear export of profilin-actin complexes. A pseudogene of this gene is located on the long arm of chromosome 14. Alternative splicing results in multiple

Nanjing BYabscience technology Co.,Ltd



transcript variants that encode different protein isoforms. [provided by RefSeq, Aug 2012],

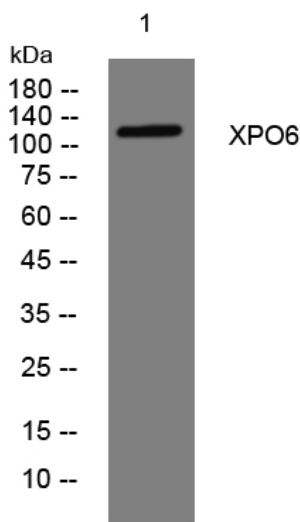
matters needing attention

Avoid repeated freezing and thawing!

Usage suggestions

This product can be used in immunological reaction related experiments. For more information, please consult technical personnel.

Products Images



Western blot analysis of lysates from SW480 cells, primary antibody was diluted at 1:1000, 4° over night