



WWC3 rabbit pAb

| | |
|----------------------------------|--|
| Catalog No | BYab-11621 |
| Isotype | IgG |
| Reactivity | Human |
| Applications | WB |
| Gene Name | WWC3 KIAA1280 |
| Protein Name | WWC3 |
| Immunogen | Synthesized peptide derived from human WWC3 AA range: 363-413 |
| Specificity | This antibody detects endogenous levels of WWC3 at Human |
| Formulation | Liquid in PBS containing 50% glycerol, 0.5% BSA and 0.02% sodium azide. |
| Source | Polyclonal, Rabbit,IgG |
| Purification | The antibody was affinity-purified from rabbit serum by affinity-chromatography using specific immunogen. |
| Dilution | WB 1: 500-2000 |
| Concentration | 1 mg/ml |
| Purity | ≥90% |
| Storage Stability | -20°C/1 year |
| Synonyms | |
| Observed Band | |
| Cell Pathway | cytosol, |
| Tissue Specificity | |
| Function | similarity:Belongs to the WWC family.,similarity:Contains 1 C2 domain., |
| Background | This gene encodes a member of the WWC family of proteins, which also includes the WWC1 (KIBRA) gene product and the WWC2 gene product. The protein encoded by this gene includes a C2 domain, which is known to mediate homodimerization in the related WWC1 gene product. [provided by RefSeq, Sep 2011], |
| matters needing attention | Avoid repeated freezing and thawing! |

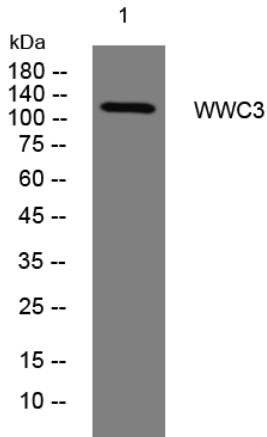
Nanjing BYabscience technology Co.,Ltd



Usage suggestions

This product can be used in immunological reaction related experiments. For more information, please consult technical personnel.

Products Images



Western blot analysis of lysates from KB cells, primary antibody was diluted at 1:1000, 4° over night