



FBXL5 rabbit pAb

Catalog No	BYab-11618
Isotype	IgG
Reactivity	Human; Mouse
Applications	WB
Gene Name	FBXL5 FBL4 FBL5 FLR1
Protein Name	FBXL5
Immunogen	Synthesized peptide derived from human FBXL5 AA range: 319-369
Specificity	This antibody detects endogenous levels of FBXL5 at Human/Mouse
Formulation	Liquid in PBS containing 50% glycerol, 0.5% BSA and 0.02% sodium azide.
Source	Polyclonal, Rabbit,IgG
Purification	The antibody was affinity-purified from rabbit serum by affinity-chromatography using specific immunogen.
Dilution	WB 1: 500-2000
Concentration	1 mg/ml
Purity	≥90%
Storage Stability	-20°C/1 year
Synonyms	
Observed Band	
Cell Pathway	Cytoplasm, perinuclear region .
Tissue Specificity	
Function	function:Probably recognizes and binds to some phosphorylated proteins and promotes their ubiquitination and degradation.,similarity:Contains 1 F-box domain.,similarity:Contains 4 LRR (leucine-rich) repeats.,subunit:Part of a SCF (SKP1-cullin-F-box) protein ligase complex.,
Background	This gene encodes a member of the F-box protein family which is characterized by an approximately 40 amino acid motif, the F-box. The F-box proteins constitute one of the four subunits of ubiquitin protein ligase complex called SCFs (SKP1-cullin-F-box), which function in phosphorylation-dependent ubiquitination. The F-box proteins are divided into 3 classes: Fbws containing WD-40 domains, Fbls containing leucine-rich repeats, and Fbxs containing either different protein-protein interaction modules or no recognizable motifs. The protein

Nanjing BYabscience technology Co.,Ltd



encoded by this gene belongs to the Fbls class and, in addition to an F-box, contains several tandem leucine-rich repeats. Alternatively spliced transcript variants have been described for this locus. [provided by RefSeq, Aug 2010],

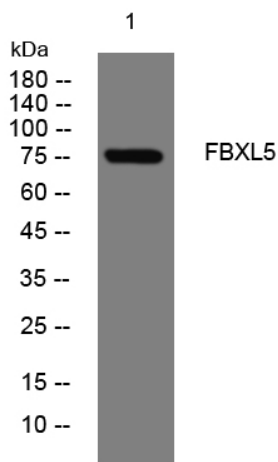
matters needing attention

Avoid repeated freezing and thawing!

Usage suggestions

This product can be used in immunological reaction related experiments. For more information, please consult technical personnel.

Products Images



Western blot analysis of lysates from HCT116 cells, primary antibody was diluted at 1:1000, 4° over night