



# CDC26 rabbit pAb

<b>Catalog No</b>	BYab-11614
<b>Isotype</b>	IgG
<b>Reactivity</b>	Human; Mouse;Rat
<b>Applications</b>	IHC;IF
<b>Gene Name</b>	CDC26 ANAPC12 C9orf17
<b>Protein Name</b>	CDC26
<b>Immunogen</b>	Synthesized peptide derived from human CDC26 AA range: 21-71
<b>Specificity</b>	This antibody detects endogenous levels of CDC26 at Human/Mouse/Rat
<b>Formulation</b>	Liquid in PBS containing 50% glycerol, 0.5% BSA and 0.02% sodium azide.
<b>Source</b>	Polyclonal, Rabbit,IgG
<b>Purification</b>	The antibody was affinity-purified from rabbit serum by affinity-chromatography using specific immunogen.
<b>Dilution</b>	IHC-p 1: 50-200. IF 1:50-200
<b>Concentration</b>	1 mg/ml
<b>Purity</b>	≥90%
<b>Storage Stability</b>	-20°C/1 year
<b>Synonyms</b>	
<b>Observed Band</b>	
<b>Cell Pathway</b>	Nucleus .
<b>Tissue Specificity</b>	
<b>Function</b>	function:Component of the anaphase promoting complex/cyclosome (APC/C), a cell cycle-regulated E3 ubiquitin-protein ligase that controls progression through mitosis and the G1 phase of the cell cycle. May recruit the E2 ubiquitin-conjugating enzymes to the complex.,pathway:Protein modification; protein ubiquitination.,PTM:Phosphorylated upon DNA damage, probably by ATM or ATR.,similarity:Belongs to the CDC26 family.,subunit:The APC/C is composed of at least 11 subunits.,
<b>Background</b>	The protein encoded by this gene is highly similar to <i>Saccharomyces cerevisiae</i> Cdc26, a component of cell cycle anaphase-promoting complex (APC). APC is composed of a group of highly conserved proteins and functions as a cell cycle-regulated ubiquitin-protein ligase. APC thus is responsible for the cell cycle

Nanjing BYabscience technology Co.,Ltd



regulated proteolysis of various proteins. [provided by RefSeq, Jul 2008],

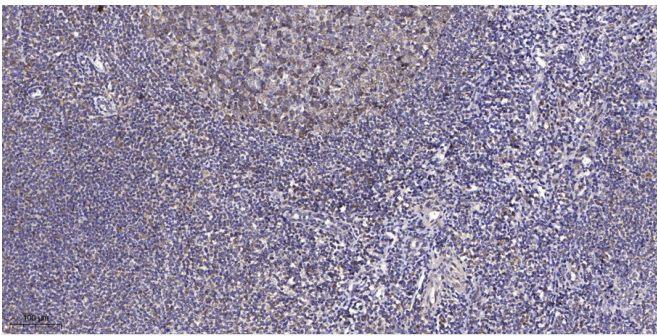
**matters needing attention**

Avoid repeated freezing and thawing!

**Usage suggestions**

This product can be used in immunological reaction related experiments. For more information, please consult technical personnel.

## Products Images



Immunohistochemical analysis of paraffin-embedded human tonsil. 1, Antibody was diluted at 1:200(4° overnight). 2, Tris-EDTA,pH9.0 was used for antigen retrieval. 3,Secondary antibody was diluted at 1:200(room temperature, 45min).