



# SPG16 rabbit pAb

<b>Catalog No</b>	BYab-11612
<b>Isotype</b>	IgG
<b>Reactivity</b>	Human; Mouse
<b>Applications</b>	WB;ELISA;IHC
<b>Gene Name</b>	SPAG16 PF20
<b>Protein Name</b>	SPG16
<b>Immunogen</b>	Synthesized peptide derived from human SPG16 AA range: 520-570
<b>Specificity</b>	This antibody detects endogenous levels of SPG16 at Human/Mouse
<b>Formulation</b>	Liquid in PBS containing 50% glycerol, 0.5% BSA and 0.02% sodium azide.
<b>Source</b>	Polyclonal, Rabbit,IgG
<b>Purification</b>	The antibody was affinity-purified from rabbit serum by affinity-chromatography using specific immunogen.
<b>Dilution</b>	WB 1:500-2000;IHC-p 1:50-300; ELISA 2000-20000
<b>Concentration</b>	1 mg/ml
<b>Purity</b>	≥90%
<b>Storage Stability</b>	-20°C/1 year
<b>Synonyms</b>	
<b>Observed Band</b>	
<b>Cell Pathway</b>	Cytoplasm . Cytoplasm, cytoskeleton, flagellum axoneme . Cytoplasm, cytoskeleton, cilium axoneme . Cell projection, cilium, flagellum . Detected on the sperm flagellum axoneme. Detected in the central apparatus of the axoneme. Colocalizes with SPAG6 on microtubules (By similarity). .
<b>Tissue Specificity</b>	Isoform 1 is detected in testis. Isoform 4 is detected in testis and brain, and at lower levels in kidney, heart, pancreas, thyroid, ovary, adrenal gland, spinal cord, trachea and liver.
<b>Function</b>	function:Necessary for sperm flagellar function.,similarity:Contains 7 WD repeats.,subcellular location:Detected on the sperm flagellum. Detected in the central apparatus of the axoneme. Colocalizes with SPAG6 on microtubules.,subunit:Interacts with SPAG6.,tissue specificity:Isoform 1 is detected in testis. Isoform 4 is detected in testis and brain, and at lower levels in kidney, heart, pancreas, thyroid, ovary, adrenal gland, spinal cord, trachea and liver.,

Nanjing BYabscience technology Co.,Ltd



### Background

Cilia and flagella are comprised of a microtubular backbone, the axoneme, which is organized by the basal body and surrounded by plasma membrane. SPAG16 encodes 2 major proteins that associate with the axoneme of sperm tail and the nucleus of postmeiotic germ cells, respectively (Zhang et al., 2007 [PubMed 17699735]).[supplied by OMIM, Jul 2008],

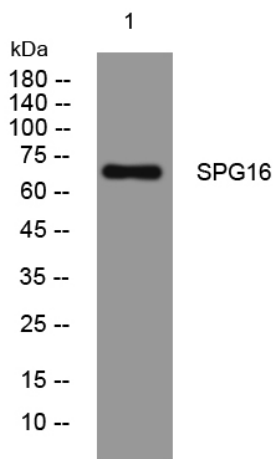
### matters needing attention

Avoid repeated freezing and thawing!

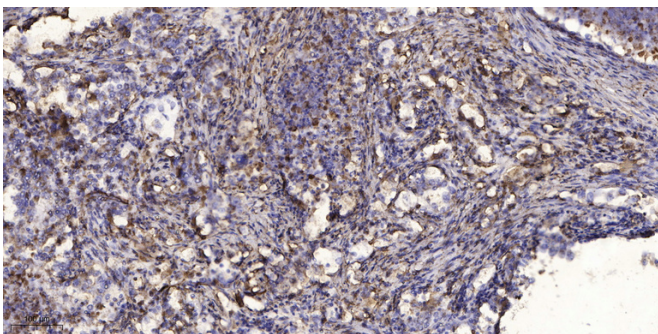
### Usage suggestions

This product can be used in immunological reaction related experiments. For more information, please consult technical personnel.

## Products Images



Western blot analysis of lysates from U2OS cells, primary antibody was diluted at 1:1000, 4° over night



Immunohistochemical analysis of paraffin-embedded human Squamous cell carcinoma of lung. 1, Antibody was diluted at 1:200(4° overnight). 2, Tris-EDTA,pH9.0 was used for antigen retrieval. 3,Secondary antibody was diluted at 1:200(room temperature, 45min).

Nanjing BYabscience technology Co.,Ltd