



NCS1 rabbit pAb

Catalog No	BYab-11610
Isotype	IgG
Reactivity	Human; Mouse;Rat
Applications	WB
Gene Name	NCS1 FLUP FREQ
Protein Name	NCS1
Immunogen	Synthesized peptide derived from human NCS1 AA range: 3-53
Specificity	This antibody detects endogenous levels of NCS1 at Human/Mouse/Rat
Formulation	Liquid in PBS containing 50% glycerol, 0.5% BSA and 0.02% sodium azide.
Source	Polyclonal, Rabbit,IgG
Purification	The antibody was affinity-purified from rabbit serum by affinity-chromatography using specific immunogen.
Dilution	WB 1: 500-2000
Concentration	1 mg/ml
Purity	≥90%
Storage Stability	-20°C/1 year
Synonyms	
Observed Band	
Cell Pathway	Golgi apparatus . Cell junction, synapse, postsynaptic density . Cytoplasm, perinuclear region . Cytoplasm . Cell membrane ; Peripheral membrane protein. Membrane ; Lipid-anchor . Associated with Golgi stacks. Post-synaptic densities of dendrites, and in the pre-synaptic nerve terminal at neuromuscular junctions. .
Tissue Specificity	
Function	function:Neuronal calcium sensor, regulator of G protein-coupled receptor phosphorylation in a calcium dependent manner. Directly regulates GRK1 (RHOK), but not GRK2 to GRK5. Can substitute for calmodulin.,miscellaneous:Binds 3 calcium ions via the second, third and fourth EF-hand.,similarity:Belongs to the recoverin family.,similarity:Contains 4 EF-hand domains.,subcellular location:Associated with Golgi stacks. Post-synaptic densities of dendrites, and in the pre-synaptic nerve terminal at neuromuscular junctions.,subunit:Interacts with KCND2.,

Nanjing BYabscience technology Co.,Ltd



Background

This gene is a member of the neuronal calcium sensor gene family, which encode calcium-binding proteins expressed predominantly in neurons. The protein encoded by this gene regulates G protein-coupled receptor phosphorylation in a calcium-dependent manner and can substitute for calmodulin. The protein is associated with secretory granules and modulates synaptic transmission and synaptic plasticity. Multiple transcript variants encoding different isoforms have been found for this gene. [provided by RefSeq, Jul 2008],

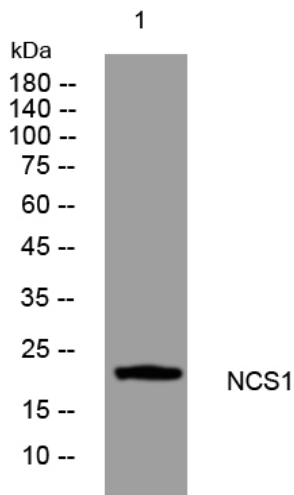
matters needing attention

Avoid repeated freezing and thawing!

Usage suggestions

This product can be used in immunological reaction related experiments. For more information, please consult technical personnel.

Products Images



Western blot analysis of lysates from DU145 cells, primary antibody was diluted at 1:1000, 4° over night