



SNX17 rabbit pAb

Catalog No	BYab-11604
Isotype	IgG
Reactivity	Human; Mouse;Rat
Applications	WB;IHC
Gene Name	SNX17 KIAA0064
Protein Name	SNX17
Immunogen	Synthesized peptide derived from human SNX17 AA range: 398-448
Specificity	This antibody detects endogenous levels of SNX17 at Human/Mouse/Rat
Formulation	Liquid in PBS containing 50% glycerol, 0.5% BSA and 0.02% sodium azide.
Source	Polyclonal, Rabbit,IgG
Purification	The antibody was affinity-purified from rabbit serum by affinity-chromatography using specific immunogen.
Dilution	WB 1:500-2000;IHC-p 1:50-300
Concentration	1 mg/ml
Purity	≥90%
Storage Stability	-20°C/1 year
Synonyms	
Observed Band	
Cell Pathway	Cytoplasm . Early endosome . Cytoplasmic vesicle membrane ; Peripheral membrane protein ; Cytoplasmic side .
Tissue Specificity	
Function	domain:The PX domain is required for association with endosomes.,function:May be involved in protein trafficking.,similarity:Belongs to the sorting nexin family.,similarity:Contains 1 PX (phox homology) domain.,similarity:Contains 1 Ras-associating domain.,subcellular location:Associated with early endosomes.,subunit:Interacts with the C-termini of P-selectin, PTC, LDLR, VLDLR, LRP1 and LRP8.,
Background	This gene encodes a member of the sorting nexin family. Members of this family contain a phox (PX) domain, which is a phosphoinositide binding domain, and are involved in intracellular trafficking. This protein does not contain a coiled coil region, like some family members, but contains a B41 domain. This protein interacts with the cytoplasmic domain of P-selectin, and may function in the

Nanjing BYabscience technology Co.,Ltd



intracellular trafficking of P-selectin. Alternative splicing results in multiple transcript variants encoding different isoforms. [provided by RefSeq, May 2012],

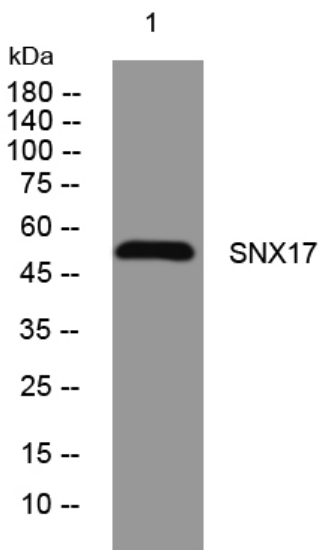
matters needing attention

Avoid repeated freezing and thawing!

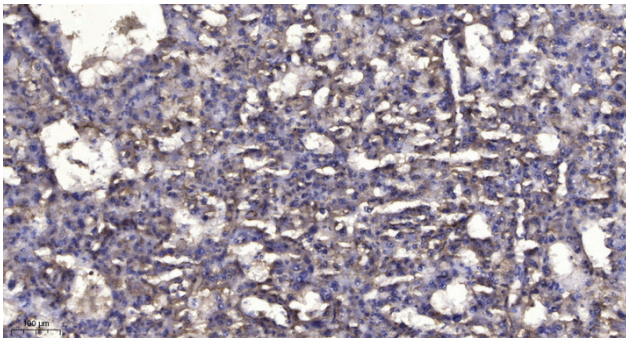
Usage suggestions

This product can be used in immunological reaction related experiments. For more information, please consult technical personnel.

Products Images



Western blot analysis of lysates from DU145 cells, primary antibody was diluted at 1:1000, 4° over night



Immunohistochemical analysis of paraffin-embedded human liver cancer. 1, Antibody was diluted at 1:200(4° overnight). 2, Tris-EDTA, pH9.0 was used for antigen retrieval. 3, Secondary antibody was diluted at 1:200(room temperature, 45min).