



BHE22 rabbit pAb

Catalog No	BYab-11599
Isotype	IgG
Reactivity	Human; Mouse
Applications	WB
Gene Name	BHLHE22 BHLHB5 TNRC20
Protein Name	BHE22
Immunogen	Synthesized peptide derived from human BHE22 AA range: 243-293
Specificity	This antibody detects endogenous levels of BHE22 at Human/Mouse
Formulation	Liquid in PBS containing 50% glycerol, 0.5% BSA and 0.02% sodium azide.
Source	Polyclonal, Rabbit,IgG
Purification	The antibody was affinity-purified from rabbit serum by affinity-chromatography using specific immunogen.
Dilution	WB 1: 500-2000
Concentration	1 mg/ml
Purity	≥90%
Storage Stability	-20°C/1 year
Synonyms	
Observed Band	
Cell Pathway	Nucleus .
Tissue Specificity	Brain-specific, with the highest expression in the cerebellum.
Function	function:Inhibits DNA binding of TCF3/E47 homodimers and TCF3 (E47)/NEUROD1 heterodimers and acts as a strong repressor of Neurod1 and Myod-responsive genes, probably by heterodimerization with class a basic helix-loop-helix factors. Despite the presence of an intact basic domain, does not bind to DNA.,similarity:Contains 1 basic helix-loop-helix (bHLH) domain.,tissue specificity:Brain-specific, with the highest expression in the cerebellum.,
Background	This gene encodes a protein that belongs to the basic helix-loop-helix (bHLH) family of transcription factors that regulate cell fate determination, proliferation, and differentiation. A similar protein in mouse is required for the development of the dorsal cochlear nuclei, and is thought to play a role in in the differentiation of neurons involved in sensory input. The mouse protein also functions in

Nanjing BYabscience technology Co.,Ltd



retinogenesis. [provided by RefSeq, Oct 2016],

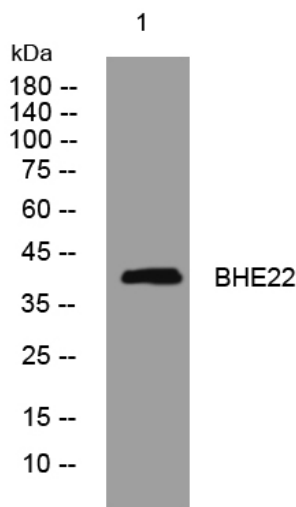
matters needing attention

Avoid repeated freezing and thawing!

Usage suggestions

This product can be used in immunological reaction related experiments. For more information, please consult technical personnel.

Products Images



Western blot analysis of lysates from HeLa cells,
primary antibody was diluted at 1:1000, 4°over night