



LX15B rabbit pAb

Catalog No	BYab-11594
Isotype	IgG
Reactivity	Human; Mouse;Rat
Applications	WB
Gene Name	ALOX15B
Protein Name	LX15B
Immunogen	Synthesized peptide derived from human LX15B AA range: 576-626
Specificity	This antibody detects endogenous levels of LX15B at Human/Mouse/Rat
Formulation	Liquid in PBS containing 50% glycerol, 0.5% BSA and 0.02% sodium azide.
Source	Polyclonal, Rabbit,IgG
Purification	The antibody was affinity-purified from rabbit serum by affinity-chromatography using specific immunogen.
Dilution	WB 1: 500-2000
Concentration	1 mg/ml
Purity	≥90%
Storage Stability	-20°C/1 year
Synonyms	
Observed Band	
Cell Pathway	[Isoform A]: Nucleus . Other isoforms are excluded from the nucleus. . ; Cytoplasm, cytosol . Cell membrane . Cytoplasm, cytoskeleton . Membrane ; Peripheral membrane protein . Cell junction, adherens junction . Cell junction, focal adhesion . Predominantly cytosolic; becomes enriched at membranes upon calcium binding. .
Tissue Specificity	Expressed in hair, prostate, lung, ovary, lymph node, spinal cord and cornea.
Function	catalytic activity:Arachidonate + O(2) = (5Z,8Z,11Z,13E)-(15S)-15-hydroperoxyicoso-5,8,11,13-tetraenoate.,cofactor:Bind s 1 iron ion per subunit.,function:Converts arachidonic acid exclusively to 15S-hydroperoxyeicosatetraenoic acid, while linoleic acid is less well metabolized.,pathway:Lipid metabolism; leukotriene D4 biosynthesis.,similarity:Belongs to the lipoxxygenase family.,similarity:Contains 1 lipoxxygenase domain.,similarity:Contains 1 PLAT domain.,tissue specificity:Expressed in hair, prostate, lung and cornea.,

Nanjing BYabscience technology Co.,Ltd



Background

This gene encodes a member of the lipoxygenase family of structurally related nonheme iron dioxygenases involved in the production of fatty acid hydroperoxides. The encoded protein converts arachidonic acid exclusively to 15S-hydroperoxyeicosatetraenoic acid, while metabolizing linoleic acid less effectively. This gene is located in a cluster of related genes and a pseudogene that spans approximately 100 kilobases on the short arm of chromosome 17. Alternatively spliced transcript variants encoding different isoforms have been described. [provided by RefSeq, Jul 2008],

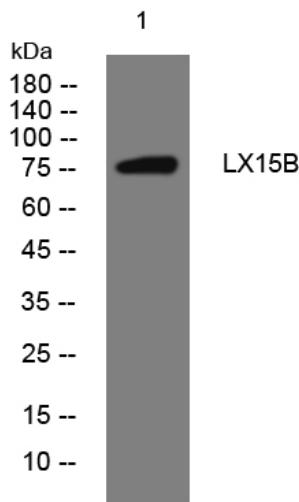
matters needing attention

Avoid repeated freezing and thawing!

Usage suggestions

This product can be used in immunological reaction related experiments. For more information, please consult technical personnel.

Products Images



Western blot analysis of lysates from MCF-7 cells, primary antibody was diluted at 1:1000, 4° over night