



# SHPRH rabbit pAb

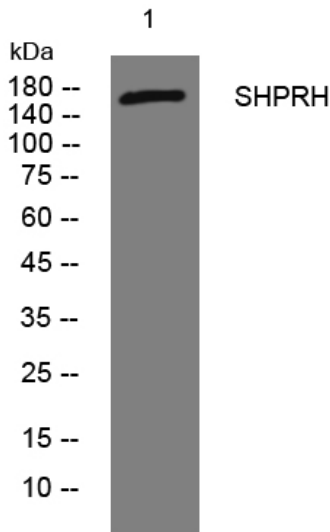
<b>Catalog No</b>	BYab-11592
<b>Isotype</b>	IgG
<b>Reactivity</b>	Human; Mouse
<b>Applications</b>	WB;IF;ELISA;IHC
<b>Gene Name</b>	SHPRH KIAA2023
<b>Protein Name</b>	SHPRH
<b>Immunogen</b>	Synthesized peptide derived from human SHPRH AA range: 9-59
<b>Specificity</b>	This antibody detects endogenous levels of SHPRH at Human/Mouse
<b>Formulation</b>	Liquid in PBS containing 50% glycerol, 0.5% BSA and 0.02% sodium azide.
<b>Source</b>	Polyclonal, Rabbit,IgG
<b>Purification</b>	The antibody was affinity-purified from rabbit serum by affinity-chromatography using specific immunogen.
<b>Dilution</b>	WB 1:500-2000; IF/ICC 1:50-200;ELISA 1:2000-20000;IHC-p 1:50-200
<b>Concentration</b>	1 mg/ml
<b>Purity</b>	≥90%
<b>Storage Stability</b>	-20°C/1 year
<b>Synonyms</b>	
<b>Observed Band</b>	
<b>Cell Pathway</b>	nucleosome,nucleus,
<b>Tissue Specificity</b>	Broadly expressed.
<b>Function</b>	domain:The RING finger mediates E3 ubiquitin ligase activity.,function:E3 ubiquitin-protein ligase involved in DNA repair. Upon genotoxic stress, accepts ubiquitin from the UBE2N-UBE2V2 E2 complex and transfers it to 'Lys-164' of PCNA which had been monoubiquitinated by UBE2A/B-RAD18, promoting the formation of non-canonical poly-ubiquitin chains linked through 'Lys-63'.,pathway:Protein modification; protein ubiquitination.,similarity:Belongs to the SNF2/RAD54 helicase family.,similarity:Contains 1 helicase ATP-binding domain.,similarity:Contains 1 helicase C-terminal domain.,similarity:Contains 1 histone H1 domain.,similarity:Contains 1 PHD-type zinc finger.,similarity:Contains 1 RING-type zinc finger.,subunit:Homodimer. Interacts with PCNA, UBE2N and RAD18.,tissue specificity:Broadly expressed.,

Nanjing BYabscience technology Co.,Ltd

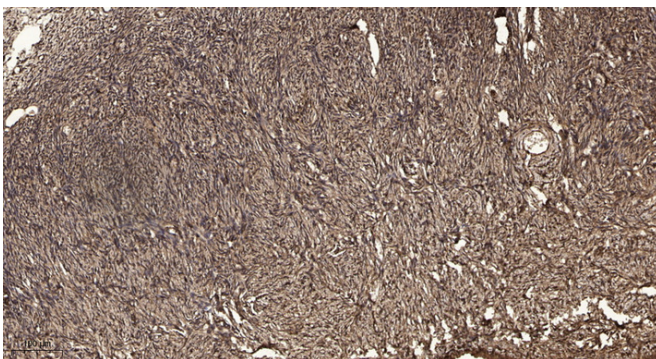


<b>Background</b>	SHPRH is a ubiquitously expressed protein that contains motifs characteristics of several DNA repair proteins, transcription factors, and helicases. SHPRH is a functional homolog of <i>S. cerevisiae</i> RAD5 (Unk et al., 2006 [PubMed 17108083]).[supplied by OMIM, Mar 2008],
<b>matters needing attention</b>	Avoid repeated freezing and thawing!
<b>Usage suggestions</b>	This product can be used in immunological reaction related experiments. For more information, please consult technical personnel.

## Products Images



Western blot analysis of lysates from MDA-MB cells, primary antibody was diluted at 1:1000, 4° over night



Immunohistochemical analysis of paraffin-embedded human oophoroma. 1, Antibody was diluted at 1:200(4° overnight). 2, Tris-EDTA, pH9.0 was used for antigen retrieval. 3, Secondary antibody was diluted at 1:200(room temperature, 45min).