



NALP4 rabbit pAb

| | |
|---------------------------|---|
| Catalog No | BYab-11590 |
| Isotype | IgG |
| Reactivity | Human;Rat;Mouse; |
| Applications | WB;IHC |
| Gene Name | NLRP4 NALP4 PAN2 PYPAF4 RNH2 |
| Protein Name | NALP4 |
| Immunogen | Synthesized peptide derived from human NALP4 AA range: 307-357 |
| Specificity | This antibody detects endogenous levels of NALP4 at Human |
| Formulation | Liquid in PBS containing 50% glycerol, 0.5% BSA and 0.02% sodium azide. |
| Source | Polyclonal, Rabbit,IgG |
| Purification | The antibody was affinity-purified from rabbit serum by affinity-chromatography using specific immunogen. |
| Dilution | WB 1:500-2000;IHC-p 1:50-300 |
| Concentration | 1 mg/ml |
| Purity | ≥90% |
| Storage Stability | -20°C/1 year |
| Synonyms | |
| Observed Band | |
| Cell Pathway | cytosol,extracellular exosome, |
| Tissue Specificity | |
| Function | alternative products:Experimental confirmation may be lacking for some isoforms,function:May be involved in inflammation.,sequence caution:Translated as Gln.,similarity:Belongs to the NLRP family.,similarity:Contains 1 DAPIN domain.,similarity:Contains 1 NACHT domain.,similarity:Contains 8 LRR (leucine-rich) repeats., |
| Background | NALPs are cytoplasmic proteins that form a subfamily within the larger CATERPILLER protein family. Most short NALPs, such as NALP4, have an N-terminal pyrin (MEFV; MIM 608107) domain (PYD), followed by a NACHT domain, a NACHT-associated domain (NAD), and a C-terminal leucine-rich repeat (LRR) region. The long NALP, NALP1 (MIM 606636), also has a C-terminal extension containing a function to find domain (FIIND) and a caspase recruitment |

Nanjing BYabscience technology Co.,Ltd



domain (CARD). NALPs are implicated in the activation of proinflammatory caspases (e.g., CASP1; MIM 147678) via their involvement in multiprotein complexes called inflammasomes (Tschopp et al., 2003 [PubMed 12563287]).[supplied by OMIM, Mar 2008],

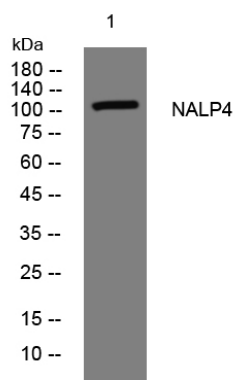
matters needing attention

Avoid repeated freezing and thawing!

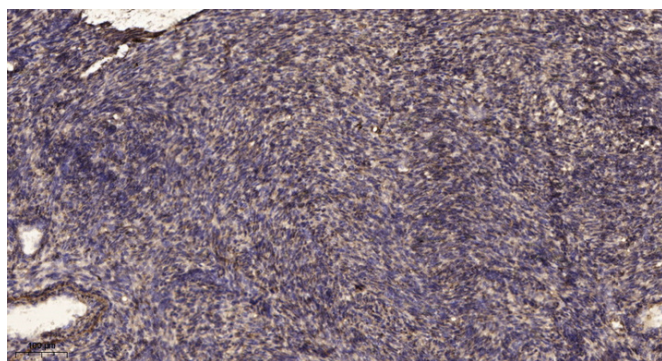
Usage suggestions

This product can be used in immunological reaction related experiments. For more information, please consult technical personnel.

Products Images



Western blot analysis of lysates from KB cells, primary antibody was diluted at 1:1000, 4° over night



Immunohistochemical analysis of paraffin-embedded human uterus. 1, Antibody was diluted at 1:200(4° overnight). 2, Tris-EDTA, pH9.0 was used for antigen retrieval. 3, Secondary antibody was diluted at 1:200(room temperature, 45min).