



JAZF1 rabbit pAb

| | |
|---------------------------|--------------------------------------------------------------------------------------------------------------------------------------------------------------------------------------------------------------------------------------------------------------------------------------------------------------------------------------------------------------------------------------------------------------------------------------------------------------------------------------------------------------------------------|
| Catalog No | BYab-11586 |
| Isotype | IgG |
| Reactivity | Human; Mouse |
| Applications | WB;IHC |
| Gene Name | JAZF1 TIP27 ZNF802 |
| Protein Name | JAZF1 |
| Immunogen | Synthesized peptide derived from human JAZF1 AA range: 57-107 |
| Specificity | This antibody detects endogenous levels of JAZF1 at Human/Mouse |
| Formulation | Liquid in PBS containing 50% glycerol, 0.5% BSA and 0.02% sodium azide. |
| Source | Polyclonal, Rabbit,IgG |
| Purification | The antibody was affinity-purified from rabbit serum by affinity-chromatography using specific immunogen. |
| Dilution | WB 1:500-2000;IHC-p 1:50-300 |
| Concentration | 1 mg/ml |
| Purity | ≥90% |
| Storage Stability | -20°C/1 year |
| Synonyms | |
| Observed Band | |
| Cell Pathway | Nucleus . |
| Tissue Specificity | Highest expression in testis with moderate levels in colon, placenta, prostate and ovary and low levels in brain, spleen, liver and small intestine. |
| Function | disease:A chromosomal aberration involving JAZF1 may be a cause of endometrial stromal tumors. Translocation t(7;17)(p15;q21) with SUZ12. The translocation generates the JAZF1-SUZ12 oncogene consisting of the N-terminus part of JAZF1 and the C-terminus part of SUZ12. It is frequently found in all cases of endometrial stromal tumors, except in endometrial stromal sarcomas, where it is rarer.,function:Potential transcription factor.,similarity:Contains 3 C2H2-type zinc fingers.,subunit:Interacts with TAK1., |
| Background | This gene encodes a nuclear protein with three C2H2-type zinc fingers, and functions as a transcriptional repressor. Chromosomal aberrations involving this gene are associated with endometrial stromal tumors. Alternatively spliced variants which encode different protein isoforms have been described; however, |

Nanjing BYabscience technology Co.,Ltd



not all variants have been fully characterized [provided by RefSeq, Jul 2008],

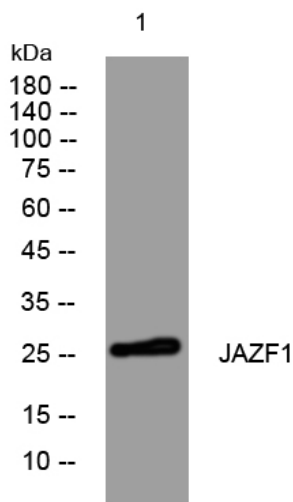
matters needing attention

Avoid repeated freezing and thawing!

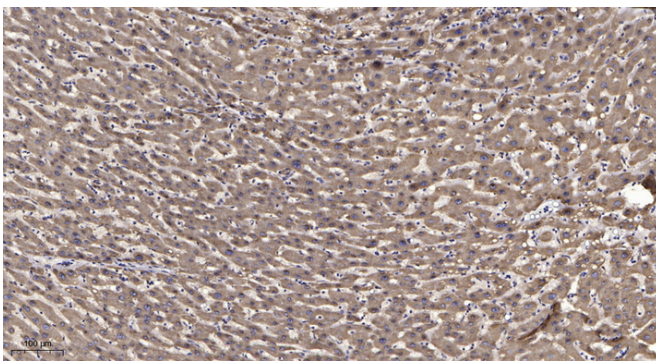
Usage suggestions

This product can be used in immunological reaction related experiments. For more information, please consult technical personnel.

Products Images



Western blot analysis of lysates from AD293 cells, primary antibody was diluted at 1:1000, 4° over night



Immunohistochemical analysis of paraffin-embedded human liver cancer. 1, Antibody was diluted at 1:200(4° overnight). 2, Tris-EDTA, pH9.0 was used for antigen retrieval. 3, Secondary antibody was diluted at 1:200(room temperature, 45min).

Nanjing BYabscience technology Co.,Ltd