



PCLI1 rabbit pAb

Catalog No	BYab-11574
Isotype	IgG
Reactivity	Human; Mouse
Applications	WB;ELISA;IHC
Gene Name	PID1 NYGGF4 PCLI1 HMFN2073
Protein Name	PCLI1
Immunogen	Synthesized peptide derived from human PCLI1 AA range: 144-194
Specificity	This antibody detects endogenous levels of PCLI1 at Human/Mouse
Formulation	Liquid in PBS containing 50% glycerol, 0.5% BSA and 0.02% sodium azide.
Source	Polyclonal, Rabbit,IgG
Purification	The antibody was affinity-purified from rabbit serum by affinity-chromatography using specific immunogen.
Dilution	WB 1:500-2000;IHC-p 1:50-300; ELISA 2000-20000
Concentration	1 mg/ml
Purity	≥90%
Storage Stability	-20°C/1 year
Synonyms	
Observed Band	
Cell Pathway	Cytoplasm .
Tissue Specificity	Expressed in subcutaneous fat, heart, skeletal muscle, brain, colon, thymus, spleen, kidney, liver, small intestine, placenta, lung and peripheral blood leukocyte.
Function	function:Increases proliferation of preadipocytes without affecting adipocytic differentiation.,induction:Up-regulated in fat of obese subjects.,polymorphism:Some sequences seem to have a duplication of exon 2.,similarity:Contains 1 PID domain.,subunit:Found in a complex with PID1/PCLI1, LRP1 and CUBN1. Interacts with LRP1 and CUBN1.,tissue specificity:Expressed in subcutaneous fat, heart, skeletal muscle, brain, colon, thymus, spleen, kidney, liver, small intestine, placenta, lung and peripheral blood leukocyte.,

Background

Nanjing BYabscience technology Co.,Ltd



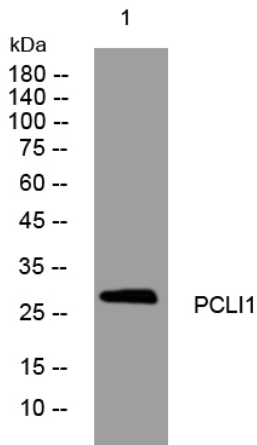
matters needing attention

Avoid repeated freezing and thawing!

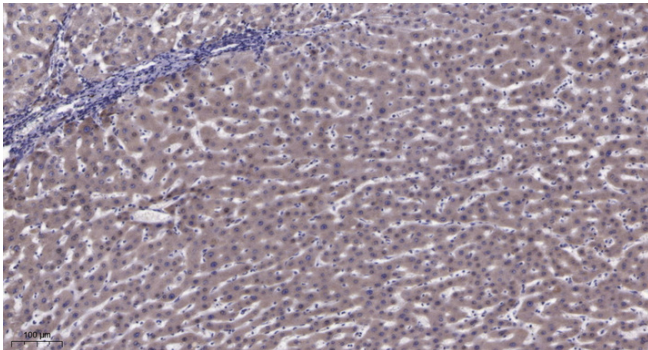
Usage suggestions

This product can be used in immunological reaction related experiments. For more information, please consult technical personnel.

Products Images



Western blot analysis of lysates from Hela cells, primary antibody was diluted at 1:1000, 4° over night



Immunohistochemical analysis of paraffin-embedded human liver cancer. 1, Antibody was diluted at 1:200(4° overnight). 2, Tris-EDTA, pH9.0 was used for antigen retrieval. 3, Secondary antibody was diluted at 1:200(room temperature, 45min).