



CLLU1 rabbit pAb

Catalog No	BYab-11570
Isotype	IgG
Reactivity	Human;Rat;Mouse;
Applications	WB
Gene Name	CLLU1
Protein Name	CLLU1
Immunogen	Synthesized peptide derived from human CLLU1 AA range: 23-73
Specificity	This antibody detects endogenous levels of CLLU1 at Human
Formulation	Liquid in PBS containing 50% glycerol, 0.5% BSA and 0.02% sodium azide.
Source	Polyclonal, Rabbit,IgG
Purification	The antibody was affinity-purified from rabbit serum by affinity-chromatography using specific immunogen.
Dilution	WB 1: 500-2000
Concentration	1 mg/ml
Purity	≥90%
Storage Stability	-20°C/1 year
Synonyms	
Observed Band	
Cell Pathway	Cytoplasm . Detected in the cytoplasm of chronic lymphocytic leukemia (CLL) cells.
Tissue Specificity	Specifically expressed in chronic lymphocytic leukemia (CLL) cells from patients without immunoglobulin heavy-chain hypermutations. Expression is detected in all CLL cells and levels are similar in patients before and after treatment.
Function	disease:High CLLU1 expression in patients with CLL is associated with poor clinical outcome.,miscellaneous:Tridimensional modeling predicts that it may interact with the IL-4 receptor.,tissue specificity:Specifically expressed in chronic lymphocytic leukemia (CLL) cells from patients without immunoglobulin heavy-chain hypermutations.,
Background	The protein encoded by this gene is overexpressed in chronic lymphocytic leukemia (CLL) and serves as a good prognostic marker for the disease. Methylation of certain genes, including this one, have been associated with CLL. This gene is protein-coding in humans and non-protein coding in other primates. Three transcript variants, one protein-coding and the other two non-protein

Nanjing BYabscience technology Co.,Ltd



coding, have been found for this gene. [provided by RefSeq, Nov 2015],

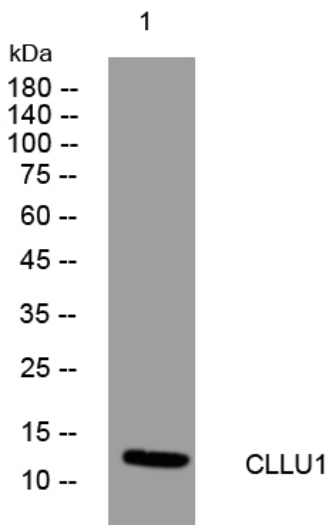
matters needing attention

Avoid repeated freezing and thawing!

Usage suggestions

This product can be used in immunological reaction related experiments. For more information, please consult technical personnel.

Products Images



Western blot analysis of lysates from 3T3 cells, primary antibody was diluted at 1:1000, 4° over night