



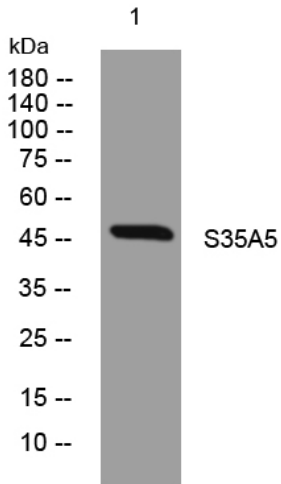
S35A5 rabbit pAb

Catalog No	BYab-11565
Isotype	IgG
Reactivity	Human; Mouse
Applications	WB
Gene Name	SLC35A5 UNQ164/PRO190
Protein Name	S35A5
Immunogen	Synthesized peptide derived from human S35A5 AA range: 107-157
Specificity	This antibody detects endogenous levels of S35A5 at Human/Mouse
Formulation	Liquid in PBS containing 50% glycerol, 0.5% BSA and 0.02% sodium azide.
Source	Polyclonal, Rabbit,IgG
Purification	The antibody was affinity-purified from rabbit serum by affinity-chromatography using specific immunogen.
Dilution	WB 1: 500-2000
Concentration	1 mg/ml
Purity	≥90%
Storage Stability	-20°C/1 year
Synonyms	
Observed Band	
Cell Pathway	Membrane ; Multi-pass membrane protein .
Tissue Specificity	
Function	similarity:Belongs to the nucleotide-sugar transporter family. SLC35A subfamily.,
Background	
matters needing attention	Avoid repeated freezing and thawing!
Usage suggestions	This product can be used in immunological reaction related experiments. For more information, please consult technical personnel.

Nanjing BYabscience technology Co.,Ltd



Products Images



Western blot analysis of lysates from U2OS cells,
primary antibody was diluted at 1:1000, 4° over night