



FIBP rabbit pAb

Catalog No	BYab-11557
Isotype	IgG
Reactivity	Human; Mouse
Applications	WB
Gene Name	FIBP
Protein Name	FIBP
Immunogen	Synthesized peptide derived from human FIBP AA range: 104-154
Specificity	This antibody detects endogenous levels of FIBP at Human/Mouse
Formulation	Liquid in PBS containing 50% glycerol, 0.5% BSA and 0.02% sodium azide.
Source	Polyclonal, Rabbit,IgG
Purification	The antibody was affinity-purified from rabbit serum by affinity-chromatography using specific immunogen.
Dilution	WB 1: 500-2000
Concentration	1 mg/ml
Purity	≥90%
Storage Stability	-20°C/1 year
Synonyms	
Observed Band	
Cell Pathway	Nucleus. Endomembrane system; Peripheral membrane protein. Also associated with cytoplasmic membranes, particularly of mitochondria.
Tissue Specificity	Highly expressed in heart, skeletal muscle and pancreas. Expressed at lower levels in brain. Also found in placenta, liver and kidney.
Function	function:May be involved in mitogenic function of FGF1.,subcellular location:Also associated with cytoplasmic membranes, particularly of mitochondria.,subunit:Binds to internalized FGF1.,tissue specificity:Highly expressed in heart, skeletal muscle and pancreas. Expressed at lower levels in brain. Also found in placenta, liver and kidney.,
Background	Acidic fibroblast growth factor is mitogenic for a variety of different cell types and acts by stimulating mitogenesis or inducing morphological changes and differentiation. The FIBP protein is an intracellular protein that binds selectively to acidic fibroblast growth factor (aFGF). It is postulated that FIBP may be involved in the mitogenic action of aFGF. Two transcript variants encoding different isoforms have been found for this gene. [provided by RefSeq, Jul 2008],

Nanjing BYabscience technology Co.,Ltd



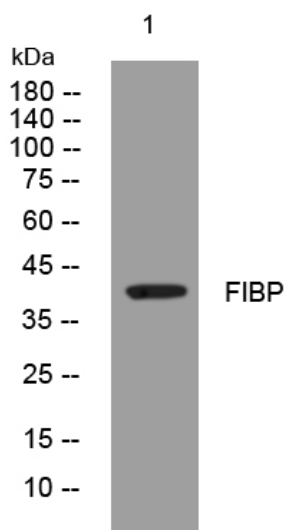
matters needing attention

Avoid repeated freezing and thawing!

Usage suggestions

This product can be used in immunological reaction related experiments. For more information, please consult technical personnel.

Products Images



Western blot analysis of lysates from HeLa cells, primary antibody was diluted at 1:1000, 4° over night