



ZN140 rabbit pAb

Catalog No	BYab-11551
Isotype	IgG
Reactivity	Human;Rat;Mouse;
Applications	WB
Gene Name	ZNF140
Protein Name	ZN140
Immunogen	Synthesized peptide derived from human ZN140 AA range: 222-272
Specificity	This antibody detects endogenous levels of ZN140 at Human
Formulation	Liquid in PBS containing 50% glycerol, 0.5% BSA and 0.02% sodium azide.
Source	Polyclonal, Rabbit,IgG
Purification	The antibody was affinity-purified from rabbit serum by affinity-chromatography using specific immunogen.
Dilution	WB 1: 500-2000
Concentration	1 mg/ml
Purity	≥90%
Storage Stability	-20°C/1 year
Synonyms	
Observed Band	
Cell Pathway	Nucleus .
Tissue Specificity	Seems ubiquitous. Seen in the heart, brain, placenta, lung, liver, skeletal muscle, kidney and pancreas.
Function	function:May be involved in transcriptional regulation as a repressor.,similarity:Belongs to the krueppel C2H2-type zinc-finger protein family.,similarity:Contains 1 KRAB domain.,similarity:Contains 10 C2H2-type zinc fingers.,tissue specificity:Seems ubiquitous. Seen in the heart, brain, placenta, lung, liver, skeletal muscle, kidney and pancreas.,
Background	
matters needing attention	Avoid repeated freezing and thawing!

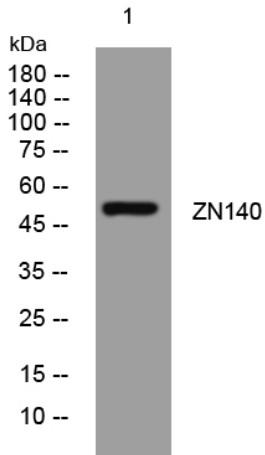
Nanjing BYabscience technology Co.,Ltd



Usage suggestions

This product can be used in immunological reaction related experiments. For more information, please consult technical personnel.

Products Images



Western blot analysis of lysates from Jarkat cells, primary antibody was diluted at 1:1000, 4° over night