



KR105 rabbit pAb

Catalog No	BYab-11548
Isotype	IgG
Reactivity	Human;Rat;Mouse;
Applications	WB;ELISA;IHC
Gene Name	KRTAP10-5 KAP10.5 KAP18-5 KRTAP10.5 KRTAP18-5 KRTAP18.5
Protein Name	KR105
Immunogen	Synthesized peptide derived from human KR105 AA range: 88-138
Specificity	This antibody detects endogenous levels of KR105 at Human
Formulation	Liquid in PBS containing 50% glycerol, 0.5% BSA and 0.02% sodium azide.
Source	Polyclonal, Rabbit,IgG
Purification	The antibody was affinity-purified from rabbit serum by affinity-chromatography using specific immunogen.
Dilution	WB 1:500-2000;IHC-p 1:50-300; ELISA 2000-20000
Concentration	1 mg/ml
Purity	≥90%
Storage Stability	-20°C/1 year
Synonyms	
Observed Band	
Cell Pathway	keratin filament,
Tissue Specificity	Restricted to a narrow region of the hair fiber cuticle, lying approximately 20 cell layers above the apex of the dermal papilla of the hair root; not detected in any other tissues.
Function	function:In the hair cortex, hair keratin intermediate filaments are embedded in an interfilamentous matrix, consisting of hair keratin-associated proteins (KRTAP), which are essential for the formation of a rigid and resistant hair shaft through their extensive disulfide bond cross-linking with abundant cysteine residues of hair keratins. The matrix proteins include the high-sulfur and high-glycine-tyrosine keratins.,similarity:Belongs to the KRTAP type 10 family.,subunit:Interacts with hair keratins.,tissue specificity:Restricted to a narrow region of the hair fibre cuticle, lying approximately 20 cell layers above the apex of the dermal papilla of the hair root; not detected in any other tissues.,

Nanjing BYabscience technology Co.,Ltd



Background

This is an intronless gene located in a cluster of related genes on the q arm of chromosome 21. The proteins encoded by these genes form disulfide bonds with cysteine residues in hair keratins, thereby contributing to the structure and stability of hair fibers. [provided by RefSeq, Apr 2014],

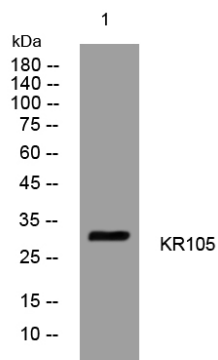
matters needing attention

Avoid repeated freezing and thawing!

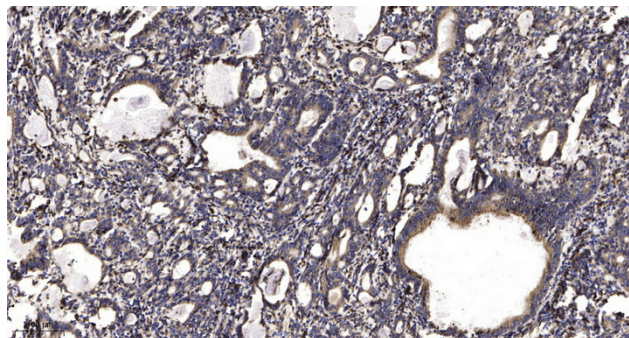
Usage suggestions

This product can be used in immunological reaction related experiments. For more information, please consult technical personnel.

Products Images



Western blot analysis of lysates from HeLa cells, primary antibody was diluted at 1:1000, 4° over night



Immunohistochemical analysis of paraffin-embedded human Gastric adenocarcinoma. 1, Antibody was diluted at 1:200(4° overnight). 2, Tris-EDTA,pH9.0 was used for antigen retrieval. 3,Secondary antibody was diluted at 1:200(room temperature, 45min).