



NKD2 rabbit pAb

Catalog No	BYab-11539
Isotype	IgG
Reactivity	Human; Mouse
Applications	WB
Gene Name	NKD2
Protein Name	NKD2
Immunogen	Synthesized peptide derived from human NKD2 AA range: 311-361
Specificity	This antibody detects endogenous levels of NKD2 at Human/Mouse
Formulation	Liquid in PBS containing 50% glycerol, 0.5% BSA and 0.02% sodium azide.
Source	Polyclonal, Rabbit,IgG
Purification	The antibody was affinity-purified from rabbit serum by affinity-chromatography using specific immunogen.
Dilution	WB 1: 500-2000
Concentration	1 mg/ml
Purity	≥90%
Storage Stability	-20°C/1 year
Synonyms	
Observed Band	
Cell Pathway	Cell membrane . Cytoplasm . Cytoplasmic vesicle .
Tissue Specificity	Expressed in kidney, lung, pancreas and spleen.
Function	developmental stage:Expressed in fetal kidney and lung.,function:Cell autonomous antagonist of the canonical Wnt signaling pathway. May activate a second Wnt signaling pathway that controls planar cell polarity (By similarity). Required for processing of TGFA and for targeting of TGFA to the basolateral membrane of polarized epithelial cells.,similarity:Belongs to the NKD family.,similarity:Contains 1 EF-hand domain.,subunit:Interacts with DVL1, DVL2, DVL3 and PPP2R3A (By similarity). Interacts with TGFA.,tissue specificity:Expressed in kidney, lung, pancreas and spleen.,
Background	This gene encodes a member of a family of proteins that function as negative regulators of Wnt receptor signaling through interaction with Dishevelled family members. The encoded protein participates in the delivery of transforming growth

Nanjing BYabscience technology Co.,Ltd



factor alpha-containing vesicles to the cell membrane. Alternatively spliced transcript variants encoding multiple isoforms have been observed for this gene. [provided by RefSeq, Aug 2012],

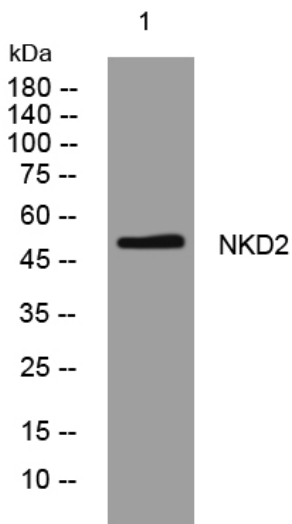
matters needing attention

Avoid repeated freezing and thawing!

Usage suggestions

This product can be used in immunological reaction related experiments. For more information, please consult technical personnel.

Products Images



Western blot analysis of lysates from SW480 cells, primary antibody was diluted at 1:1000, 4° over night