



IMA8 rabbit pAb

Catalog No	BYab-11535
Isotype	IgG
Reactivity	Human; Mouse
Applications	WB
Gene Name	KPNA7
Protein Name	IMA8
Immunogen	Synthesized peptide derived from human IMA8 AA range: 313-363
Specificity	This antibody detects endogenous levels of IMA8 at Human/Mouse
Formulation	Liquid in PBS containing 50% glycerol, 0.5% BSA and 0.02% sodium azide.
Source	Polyclonal, Rabbit,IgG
Purification	The antibody was affinity-purified from rabbit serum by affinity-chromatography using specific immunogen.
Dilution	WB 1: 500-2000
Concentration	1 mg/ml
Purity	≥90%
Storage Stability	-20°C/1 year
Synonyms	
Observed Band	
Cell Pathway	Nucleus .
Tissue Specificity	
Function	function:Functions in nuclear protein import.,similarity:Belongs to the importin alpha family.,similarity:Contains 1 IBB domain.,similarity:Contains 8 ARM repeats.,
Background	The transport of molecules between the nucleus and the cytoplasm in eukaryotic cells is mediated by the nuclear pore complex (NPC), which consists of 60-100 proteins. Small molecules (up to 70 kD) can pass through the nuclear pore by nonselective diffusion while larger molecules are transported by an active process. The protein encoded by this gene belongs to the importin alpha family, and is involved in nuclear protein import, but exhibits different nuclear localization signal binding specificity compared to other members of the family. A pseudogene of this gene has been defined on chromosome 5. [provided by RefSeq, Jul 2016],

Nanjing BYabscience technology Co.,Ltd



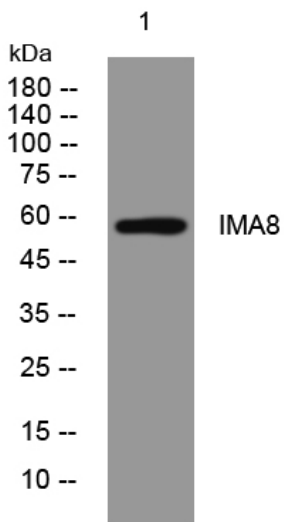
matters needing attention

Avoid repeated freezing and thawing!

Usage suggestions

This product can be used in immunological reaction related experiments. For more information, please consult technical personnel.

Products Images



Western blot analysis of lysates from MCF-7 cells, primary antibody was diluted at 1:1000, 4° over night