



# ASCC3 rabbit pAb

<b>Catalog No</b>	BYab-11532
<b>Isotype</b>	IgG
<b>Reactivity</b>	Human; Mouse;Rat
<b>Applications</b>	WB
<b>Gene Name</b>	ASCC3 HELIC1
<b>Protein Name</b>	ASCC3
<b>Immunogen</b>	Synthesized peptide derived from human ASCC3 AA range: 2053-2103
<b>Specificity</b>	This antibody detects endogenous levels of ASCC3 at Human/Mouse/Rat
<b>Formulation</b>	Liquid in PBS containing 50% glycerol, 0.5% BSA and 0.02% sodium azide.
<b>Source</b>	Polyclonal, Rabbit,IgG
<b>Purification</b>	The antibody was affinity-purified from rabbit serum by affinity-chromatography using specific immunogen.
<b>Dilution</b>	WB 1: 500-2000
<b>Concentration</b>	1 mg/ml
<b>Purity</b>	≥90%
<b>Storage Stability</b>	-20°C/1 year
<b>Synonyms</b>	
<b>Observed Band</b>	
<b>Cell Pathway</b>	Nucleus . Nucleus speckle . Cytoplasm, cytosol . Colocalizes with ALKBH3 and ASCC2 in nuclear foci when cells have been exposed to alkylating agents that cause DNA damage. .
<b>Tissue Specificity</b>	Ubiquitous.
<b>Function</b>	function:Enhances NF-kappa-B, SRF and AP1 transactivation.,similarity:Belongs to the helicase family.,similarity:Contains 2 helicase ATP-binding domains.,similarity:Contains 2 helicase C-terminal domains.,similarity:Contains 3 SEC63 domains.,subunit:Part of TRIP4 complex, that contains ASCC1, ASCC2 and ASCC3.,tissue specificity:Ubiquitous.,
<b>Background</b>	This gene encodes a protein that belongs to a family of helicases that are involved in the ATP-dependent unwinding of nucleic acid duplexes. The encoded protein is the largest subunit of the activating signal cointegrator 1 complex that is involved in DNA repair and resistance to alkylation damage. Alternate splicing results in multiple transcript variants. [provided by RefSeq, Sep 2013],

Nanjing BYabscience technology Co.,Ltd



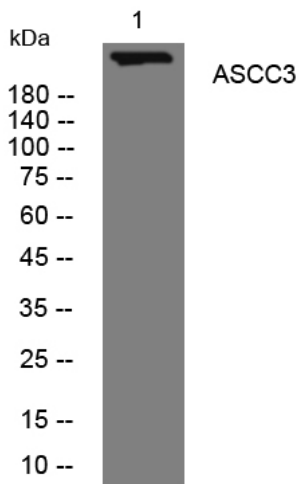
**matters needing attention**

Avoid repeated freezing and thawing!

**Usage suggestions**

This product can be used in immunological reaction related experiments. For more information, please consult technical personnel.

## Products Images



Western blot analysis of lysates from K562 cells, primary antibody was diluted at 1:1000, 4° over night