



UBA3 rabbit pAb

Catalog No	BYab-11531
Isotype	IgG
Reactivity	Human; Mouse;Rat
Applications	WB
Gene Name	UBA3 UBE1C
Protein Name	UBA3
Immunogen	Synthesized peptide derived from human UBA3 AA range: 105-155
Specificity	This antibody detects endogenous levels of UBA3 at Human/Mouse/Rat
Formulation	Liquid in PBS containing 50% glycerol, 0.5% BSA and 0.02% sodium azide.
Source	Polyclonal, Rabbit,IgG
Purification	The antibody was affinity-purified from rabbit serum by affinity-chromatography using specific immunogen.
Dilution	WB 1: 500-2000
Concentration	1 mg/ml
Purity	≥90%
Storage Stability	-20°C/1 year
Synonyms	
Observed Band	
Cell Pathway	nucleus,cytosol,
Tissue Specificity	Ubiquitously expressed.
Function	enzyme regulation:Binding of TP53BP2 to the regulatory subunit NAE1 decreases activity.,function:Catalytic subunit of the dimeric UBA3-NAE1 E1 enzyme. E1 activates NEDD8 by first adenylating its C-terminal glycine residue with ATP, thereafter linking this residue to the side chain of the catalytic cysteine, yielding a NEDD8-UBA3 thioester and free AMP. E1 finally transfers NEDD8 to the catalytic cysteine of UBE2M. Down-regulates steroid receptor activity. Necessary for cell cycle progression.,miscellaneous:Arg-211 acts as a selectivity gate, preventing misactivation of ubiquitin by this NEDD8-specific E1 complex.,pathway:Protein modification; protein neddylation.,similarity:Belongs to the ubiquitin-activating E1 family. UBA3 subfamily.,subunit:Heterodimer of UBA3 and NAE1. Interacts with NEDD8, UBE2F and UBE2M. Binds ESR1 and ESR2 with bound steroid ligand.,tissue specificity:Ubiquitousl

Nanjing BYabscience technology Co.,Ltd



Background

The modification of proteins with ubiquitin is an important cellular mechanism for targeting abnormal or short-lived proteins for degradation. Ubiquitination involves at least three classes of enzymes: ubiquitin-activating enzymes, or E1s, ubiquitin-conjugating enzymes, or E2s, and ubiquitin-protein ligases, or E3s. This gene encodes a member of the E1 ubiquitin-activating enzyme family. The encoded enzyme associates with AppBp1, an amyloid beta precursor protein binding protein, to form a heterodimer, and then the enzyme complex activates NEDD8, a ubiquitin-like protein, which regulates cell division, signaling and embryogenesis. Multiple alternatively spliced transcript variants encoding distinct isoforms have been found for this gene. [provided by RefSeq, Jul 2008],

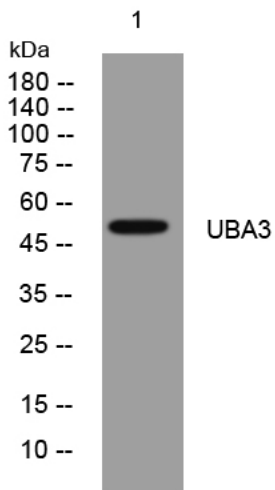
matters needing attention

Avoid repeated freezing and thawing!

Usage suggestions

This product can be used in immunological reaction related experiments. For more information, please consult technical personnel.

Products Images



Western blot analysis of lysates from A431 cells, primary antibody was diluted at 1:1000, 4° over night