



IFT27 rabbit pAb

| | |
|----------------------------------|--|
| Catalog No | BYab-11526 |
| Isotype | IgG |
| Reactivity | Human; Mouse |
| Applications | WB |
| Gene Name | IFT27 RABL4 RAYL |
| Protein Name | IFT27 |
| Immunogen | Synthesized peptide derived from human IFT27 AA range: 8-58 |
| Specificity | This antibody detects endogenous levels of IFT27 at Human/Mouse |
| Formulation | Liquid in PBS containing 50% glycerol, 0.5% BSA and 0.02% sodium azide. |
| Source | Polyclonal, Rabbit,IgG |
| Purification | The antibody was affinity-purified from rabbit serum by affinity-chromatography using specific immunogen. |
| Dilution | WB 1: 500-2000 |
| Concentration | 1 mg/ml |
| Purity | ≥90% |
| Storage Stability | -20°C/1 year |
| Synonyms | |
| Observed Band | |
| Cell Pathway | Cell projection, cilium . Cytoplasm . Cell projection, cilium, flagellum . Localizes to the sperm flagellum. . |
| Tissue Specificity | |
| Function | function:Possesses GTPase activity.,similarity:Belongs to the small GTPase superfamily. Ras family., |
| Background | This gene encodes a GTP-binding protein that is a core component of the intraflagellar transport complex B. Characterization of the similar Chlamydomonas protein indicates a function in cell cycle control. Alternative splicing of this gene results in multiple transcript variants. [provided by RefSeq, Jan 2012], |
| matters needing attention | Avoid repeated freezing and thawing! |

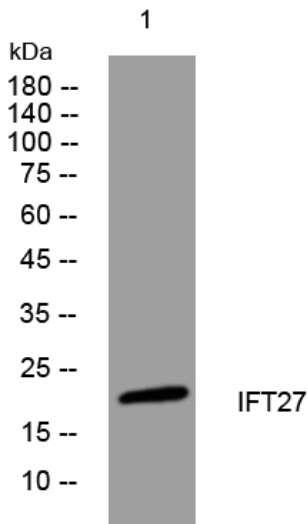
Nanjing BYabscience technology Co.,Ltd



Usage suggestions

This product can be used in immunological reaction related experiments. For more information, please consult technical personnel.

Products Images



Western blot analysis of lysates from 293T cells, primary antibody was diluted at 1:1000, 4° over night