



LRC59 rabbit pAb

Catalog No	BYab-11519
Isotype	IgG
Reactivity	Human; Mouse;Rat
Applications	WB;IHC
Gene Name	LRRC59 PRO1855
Protein Name	LRC59
Immunogen	Synthesized peptide derived from human LRC59 AA range: 110-160
Specificity	This antibody detects endogenous levels of LRC59 at Human/Mouse/Rat
Formulation	Liquid in PBS containing 50% glycerol, 0.5% BSA and 0.02% sodium azide.
Source	Polyclonal, Rabbit,IgG
Purification	The antibody was affinity-purified from rabbit serum by affinity-chromatography using specific immunogen.
Dilution	WB 1:500-2000;IHC-p 1:50-300
Concentration	1 mg/ml
Purity	≥90%
Storage Stability	-20°C/1 year
Synonyms	
Observed Band	
Cell Pathway	Microsome membrane ; Single-pass type II membrane protein . Endoplasmic reticulum membrane; Single-pass type II membrane protein. Nucleus envelope. Localization in the nuclear envelope depends upon the nuclear import machinery, including KPNB1.
Tissue Specificity	Widely expressed.
Function	similarity:Contains 5 LRR (leucine-rich) repeats.,subunit:Interacts with SGOL1.,
Background	
matters needing attention	Avoid repeated freezing and thawing!

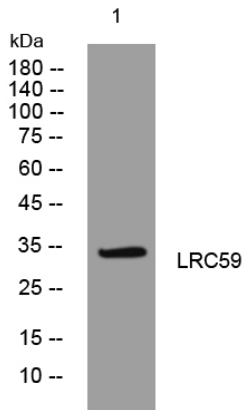
Nanjing BYabscience technology Co.,Ltd



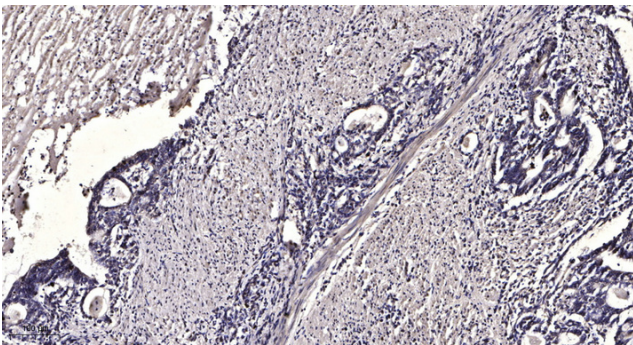
Usage suggestions

This product can be used in immunological reaction related experiments. For more information, please consult technical personnel.

Products Images



Western blot analysis of lysates from U2OS cells, primary antibody was diluted at 1:1000, 4° over night



Immunohistochemical analysis of paraffin-embedded human Gastric adenocarcinoma. 1, Antibody was diluted at 1:200(4° overnight). 2, Tris-EDTA,pH9.0 was used for antigen retrieval. 3,Secondary antibody was diluted at 1:200(room temperature, 45min).