



NOVA2 rabbit pAb

Catalog No	BYab-11514
Isotype	IgG
Reactivity	Human;Rat;Mouse;
Applications	WB
Gene Name	NOVA2 ANOVA NOVA3
Protein Name	NOVA2
Immunogen	Synthesized peptide derived from human NOVA2 AA range: 274-324
Specificity	This antibody detects endogenous levels of NOVA2 at Human
Formulation	Liquid in PBS containing 50% glycerol, 0.5% BSA and 0.02% sodium azide.
Source	Polyclonal, Rabbit,IgG
Purification	The antibody was affinity-purified from rabbit serum by affinity-chromatography using specific immunogen.
Dilution	WB 1: 500-2000
Concentration	1 mg/ml
Purity	≥90%
Storage Stability	-20°C/1 year
Synonyms	
Observed Band	
Cell Pathway	Nucleus .
Tissue Specificity	Brain. Expression restricted to astrocytes.
Function	disease:Autoantigen in the paraneoplastic opsoclonus myoclonus ataxia (POMA), a paraneoplastic neurological syndrome/disorder (PNS/D) associated with breast cancer, fallopian cancer, and SCLCa and characterized primarily by loss of inhibitory control of motor neurons in the spinal cord and brainstem. Recognized by the IgG autoantibody ANNA-2 (also called anti-Ri).,domain:The third KH domain (KH3) recognizes specifically 5'-UCA Y-3'.,function:May regulate RNA splicing or metabolism in a specific subset of developing neurons (By similarity). Binds single strand RNA.,similarity:Contains 3 KH domains.,subunit:Interacts with PTBP2.,tissue specificity:Brain. Expression restricted to astrocytes.,

Background

Nanjing BYabscience technology Co.,Ltd



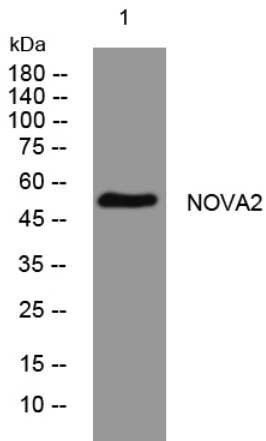
matters needing attention

Avoid repeated freezing and thawing!

Usage suggestions

This product can be used in immunological reaction related experiments. For more information, please consult technical personnel.

Products Images



Western blot analysis of lysates from HeLa cells, primary antibody was diluted at 1:1000, 4° over night