



FIZ1 rabbit pAb

Catalog No	BYab-11502
Isotype	IgG
Reactivity	Human; Mouse
Applications	WB
Gene Name	FIZ1 ZNF798
Protein Name	FIZ1
Immunogen	Synthesized peptide derived from human FIZ1 AA range: 141-191
Specificity	This antibody detects endogenous levels of FIZ1 at Human/Mouse
Formulation	Liquid in PBS containing 50% glycerol, 0.5% BSA and 0.02% sodium azide.
Source	Polyclonal, Rabbit,IgG
Purification	The antibody was affinity-purified from rabbit serum by affinity-chromatography using specific immunogen.
Dilution	WB 1: 500-2000
Concentration	1 mg/ml
Purity	≥90%
Storage Stability	-20°C/1 year
Synonyms	
Observed Band	
Cell Pathway	Cytoplasm . Nucleus .
Tissue Specificity	Widely expressed.
Function	function:May be a transcriptional repressor of NRL function in photoreceptors. Does not repress CRX-mediated transactivation.,similarity:Contains 11 C2H2-type zinc fingers.,subunit:Interacts with FLT3 cytoplasmic catalytic domain, following receptor stimulation, in a kinase-independent manner. Does not interact with other structurally related receptor tyrosine kinases, including KIT, CSF1R and PDGFR. Interacts with NRL.,tissue specificity:Widely expressed.,
Background	This gene encodes zinc finger protein, which interacts with a receptor tyrosine kinase involved in the regulation of hematopoietic and lymphoid cells. This gene product also interacts with a transcription factor that regulates the expression of rod-specific genes in retina. [provided by RefSeq, Jul 2008],

Nanjing BYabscience technology Co.,Ltd



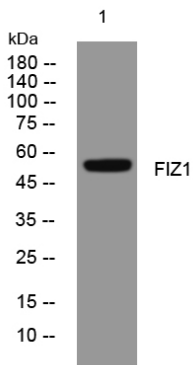
matters needing attention

Avoid repeated freezing and thawing!

Usage suggestions

This product can be used in immunological reaction related experiments. For more information, please consult technical personnel.

Products Images



Western blot analysis of lysates from MCF-7 cells, primary antibody was diluted at 1:1000, 4° over night