



SRGP2 rabbit pAb

Catalog No	BYab-11500
Isotype	IgG
Reactivity	Human; Mouse;Rat
Applications	WB
Gene Name	SRGAP2 ARHGAP34 FNBP2 KIAA0456 SRGAP2A
Protein Name	SRGP2
Immunogen	Synthesized peptide derived from human SRGP2 AA range: 476-526
Specificity	This antibody detects endogenous levels of SRGP2 at Human/Mouse/Rat
Formulation	Liquid in PBS containing 50% glycerol, 0.5% BSA and 0.02% sodium azide.
Source	Polyclonal, Rabbit,IgG
Purification	The antibody was affinity-purified from rabbit serum by affinity-chromatography using specific immunogen.
Dilution	WB 1: 500-2000
Concentration	1 mg/ml
Purity	≥90%
Storage Stability	-20°C/1 year
Synonyms	
Observed Band	
Cell Pathway	Cell membrane . Cell projection, dendritic spine . Cell junction, synapse, postsynaptic density . Cell junction, synapse, postsynaptic cell membrane . Cell projection, lamellipodium . Cytoplasmic vesicle, phagosome . Nucleus . Cytoplasm, cytosol . Recruited to actin-rich phagosomes during phagocytosis (By similarity). Translocates from nucleus to cytoplasm during development (By similarity). .
Tissue Specificity	
Function	function:Putative GTPase-activating protein for Rho family small GTPases.,similarity:Contains 1 FCH domain.,similarity:Contains 1 Rho-GAP domain.,similarity:Contains 1 SH3 domain.,subunit:Probably interacts with ROBO1.,tissue specificity:Expression at low levels in placenta, kidney, and ovary, and little or no expression in all other tissues tested.,
Background	This locus encodes a member of the SLIT-ROBO Rho GTPase activating protein family. The encoded protein stimulates GTPase activity of Rac1, and plays a role

Nanjing BYabscience technology Co.,Ltd



in cortical neuron development. This locus has several paralogs on human chromosome 1 resulting from segmental duplication. While this locus itself is conserved among various species, the paralogs are found only in the genus Homo, and not in the genomes of non-human great apes. Alternatively spliced transcript variants have been described for this locus. [provided by RefSeq, Jul 2014],

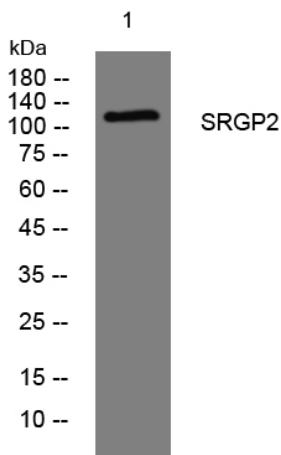
matters needing attention

Avoid repeated freezing and thawing!

Usage suggestions

This product can be used in immunological reaction related experiments. For more information, please consult technical personnel.

Products Images



Western blot analysis of lysates from CACO2 cells, primary antibody was diluted at 1:1000, 4° over night