



NALD2 rabbit pAb

Catalog No	BYab-11499
Isotype	IgG
Reactivity	Human; Mouse
Applications	WB;IHC
Gene Name	NAALAD2
Protein Name	NALD2
Immunogen	Synthesized peptide derived from human NALD2 AA range: 9-59
Specificity	This antibody detects endogenous levels of NALD2 at Human/Mouse
Formulation	Liquid in PBS containing 50% glycerol, 0.5% BSA and 0.02% sodium azide.
Source	Polyclonal, Rabbit,IgG
Purification	The antibody was affinity-purified from rabbit serum by affinity-chromatography using specific immunogen.
Dilution	WB 1:500-2000;IHC-p 1:50-300
Concentration	1 mg/ml
Purity	≥90%
Storage Stability	-20°C/1 year
Synonyms	
Observed Band	
Cell Pathway	Cell membrane ; Single-pass type II membrane protein .
Tissue Specificity	Highest expression in the testis. Also found in ovary and spleen. Weak expression in prostate, heart and placenta. In brain, expressed in striatum, parietal cortex and ventral striatum with lower levels in hippocampus, brain stem, putamen and superior colliculus.
Function	catalytic activity:Release of an unsubstituted, C-terminal glutamyl residue, typically from Ac-Asp-Glu or foyl/poly-gamma-glutamates.,cofactor:Binds 2 zinc ions per subunit. Required for NAALADase activity.,domain:The NAALADase activity is found in the central region, the dipeptidyl peptidase IV type activity in the C-terminal.,enzyme regulation:Inhibited by quisqualate.,function:Has N-acetylated-alpha-linked-acidic dipeptidase (NAALADase) activity. Also exhibits a dipeptidyl-peptidase IV type activity. Inactivate the peptide neurotransmitter N-acetylaspartylglutamate.,similarity:Belongs to the peptidase M28 family. M28B subfamily.,tissue specificity:Highest expression in the testis. Also found in ovary and spleen. Weak expression in prostate, heart and placenta. In brain, expressed

Nanjing BYabscience technology Co.,Ltd



in striatum, parietal cortex and ventral striatum with lower levels in hippocampus, brain stem, putamen an

Background

This gene is a member of the N-acetylated alpha-linked acidic dipeptidase (NAALADase) gene family. The representative member of this family is the gene encoding human prostate-specific membrane antigen (PSM), which is a marker of prostatic carcinomas and is the first to be shown to possess NAALADase activity. NAALADase cleaves N-acetyl-L-aspartate-L-glutamate (NAAG), which is a neuropeptide expressed both in the central nervous systems and in the periphery and is thought to function as a neurotransmitter. The product of this gene is a type II integral membrane protein. Transient transfection of this gene confers both NAALADase and dipetidyl peptidase IV activities to mammalian cells. This gene is highly expressed in ovary and testis as well as within discrete brain areas. Two transcript variants encoding different isoforms have been found for this gene. [provided by RefSeq, Jul 2014],

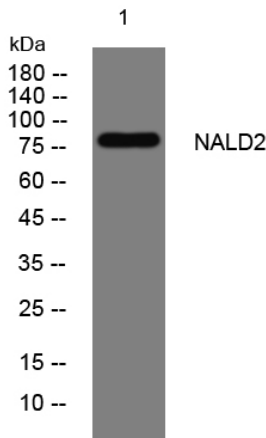
matters needing attention

Avoid repeated freezing and thawing!

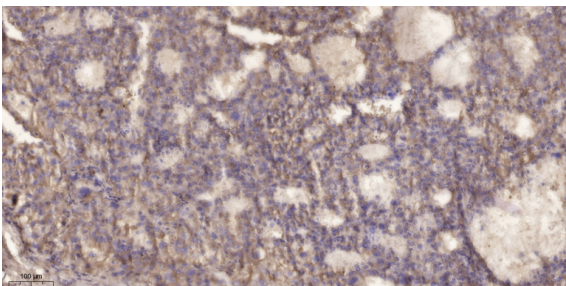
Usage suggestions

This product can be used in immunological reaction related experiments. For more information, please consult technical personnel.

Products Images



Western blot analysis of lysates from HeLa cells, primary antibody was diluted at 1:1000, 4° over night



Immunohistochemical analysis of paraffin-embedded human liver cancer. 1, Antibody was diluted at 1:200(4° overnight). 2, Tris-EDTA, pH9.0 was used for antigen retrieval. 3, Secondary antibody was diluted at 1:200(room temperature, 45min).

Nanjing BYabscience technology Co.,Ltd