



# PLP2 rabbit pAb

<b>Catalog No</b>	BYab-11498
<b>Isotype</b>	IgG
<b>Reactivity</b>	Human; Mouse;Rat
<b>Applications</b>	WB;ELISA;IHC
<b>Gene Name</b>	PLP2 A4
<b>Protein Name</b>	PLP2
<b>Immunogen</b>	Synthesized peptide derived from human PLP2 AA range: 56-106
<b>Specificity</b>	This antibody detects endogenous levels of PLP2 at Human/Mouse/Rat
<b>Formulation</b>	Liquid in PBS containing 50% glycerol, 0.5% BSA and 0.02% sodium azide.
<b>Source</b>	Polyclonal, Rabbit,IgG
<b>Purification</b>	The antibody was affinity-purified from rabbit serum by affinity-chromatography using specific immunogen.
<b>Dilution</b>	WB 1:500-2000;IHC-p 1:50-300; ELISA 2000-20000
<b>Concentration</b>	1 mg/ml
<b>Purity</b>	≥90%
<b>Storage Stability</b>	-20°C/1 year
<b>Synonyms</b>	
<b>Observed Band</b>	
<b>Cell Pathway</b>	Membrane; Multi-pass membrane protein.
<b>Tissue Specificity</b>	Enriched in colonic mucosa. The expression of A4 follows a gradient along the crypto-villus axis with the most abundant message occurring in the lower half of the crypt.
<b>Function</b>	function:May play a role in cell differentiation in the intestinal epithelium.,similarity:Contains 1 MARVEL domain.,tissue specificity:Enriched in colonic mucosa. The expression of A4 follows a gradient along the crypto-villus axis with the most abundant message occurring in the lower half of the crypt.,
<b>Background</b>	This gene encodes an integral membrane protein that localizes to the endoplasmic reticulum in colonic epithelial cells. The encoded protein can multimerize and may function as an ion channel. A polymorphism in the promoter of this gene may be linked to an increased risk of X-linked mental retardation. A pseudogene of this gene is found on chromosome 5. [provided by RefSeq, Jan 2010],

Nanjing BYabscience technology Co.,Ltd



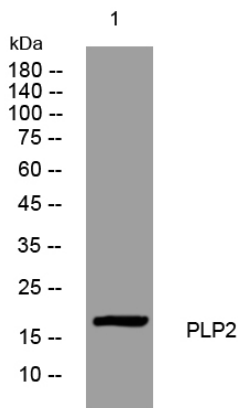
**matters needing attention**

Avoid repeated freezing and thawing!

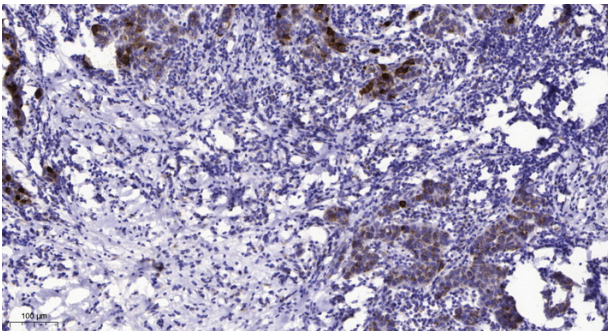
**Usage suggestions**

This product can be used in immunological reaction related experiments. For more information, please consult technical personnel.

**Products Images**



Western blot analysis of lysates from KB cells, primary antibody was diluted at 1:1000, 4° over night



Immunohistochemical analysis of paraffin-embedded human Breast cancer. 1, Antibody was diluted at 1:200(4° overnight). 2, Tris-EDTA,pH9.0 was used for antigen retrieval. 3, Secondary antibody was diluted at 1:200(room temperature, 45min).