



# BEX2 rabbit pAb

<b>Catalog No</b>	BYab-11482
<b>Isotype</b>	IgG
<b>Reactivity</b>	Human; Mouse;Rat
<b>Applications</b>	WB
<b>Gene Name</b>	BEX2
<b>Protein Name</b>	BEX2
<b>Immunogen</b>	Synthesized peptide derived from human BEX2 AA range: 28-78
<b>Specificity</b>	This antibody detects endogenous levels of BEX2 at Human/Mouse/Rat
<b>Formulation</b>	Liquid in PBS containing 50% glycerol, 0.5% BSA and 0.02% sodium azide.
<b>Source</b>	Polyclonal, Rabbit,IgG
<b>Purification</b>	The antibody was affinity-purified from rabbit serum by affinity-chromatography using specific immunogen.
<b>Dilution</b>	WB 1: 500-2000
<b>Concentration</b>	1 mg/ml
<b>Purity</b>	≥90%
<b>Storage Stability</b>	-20°C/1 year
<b>Synonyms</b>	
<b>Observed Band</b>	
<b>Cell Pathway</b>	Cytoplasm . Nucleus .
<b>Tissue Specificity</b>	Expressed in central nervous system, with high level in pituitary, cerebellum and temporal lobe. Widely expressed in breast cancer cell lines.
<b>Function</b>	caution:Was named BEX1 by some authors.,similarity:Belongs to the BEX family.,subunit:Interacts with OMP (By similarity). Interacts with LMO2, possibly leading to regulate the transcriptional activity of a DNA-binding complex containing LMO2.,tissue specificity:Expressed in central nervous system, with high level in pituitary, cerebellum and temporal lobe.,
<b>Background</b>	This gene belongs to the brain expressed X-linked gene family. The encoded protein interacts with the transcription factor LIM domain only 2 in a DNA-binding complex that recognizes the E-box element and promotes transcription. This gene has been found to be a tumor suppressor that is silenced in human glioma. In breast cancer cells, this gene product modulates apoptosis in response to estrogen and tamoxifen, and enhances the anti-proliferative effect of tamoxifen.

Nanjing BYabscience technology Co.,Ltd



Multiple transcript variants encoding different isoforms have been found for this gene. [provided by RefSeq, Dec 2009],

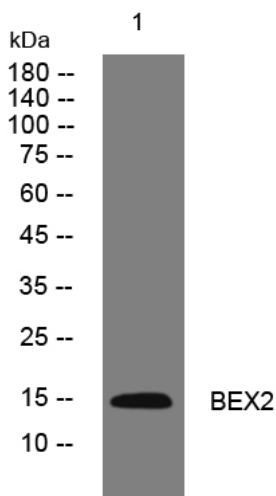
**matters needing attention**

Avoid repeated freezing and thawing!

**Usage suggestions**

This product can be used in immunological reaction related experiments. For more information, please consult technical personnel.

## Products Images



Western blot analysis of lysates from HpeG2 cells, primary antibody was diluted at 1:1000, 4° over night