



C1GLT rabbit pAb

Catalog No	BYab-11473
Isotype	IgG
Reactivity	Human; Mouse;Rat
Applications	WB
Gene Name	C1GALT1
Protein Name	C1GLT
Immunogen	Synthesized peptide derived from human C1GLT AA range: 102-152
Specificity	This antibody detects endogenous levels of C1GLT at Human/Mouse/Rat
Formulation	Liquid in PBS containing 50% glycerol, 0.5% BSA and 0.02% sodium azide.
Source	Polyclonal, Rabbit,IgG
Purification	The antibody was affinity-purified from rabbit serum by affinity-chromatography using specific immunogen.
Dilution	WB 1: 500-2000
Concentration	1 mg/ml
Purity	≥90%
Storage Stability	-20°C/1 year
Synonyms	
Observed Band	
Cell Pathway	Membrane ; Single-pass type II membrane protein .
Tissue Specificity	Widely expressed. Highly expressed in kidney, heart, placenta and liver.
Function	catalytic activity:UDP-galactose + glycoprotein N-acetyl-D-galactosamine = UDP + glycoprotein D-galactosyl-1,3-N-acetyl-D-galactosamine.,cofactor:Magnesium.,disease:Defect s in C1GALT1 may be a cause of susceptbility to IgA nephropathy (IgAN). IgAN is the most common primary glomerulonephritis, which is partly due to aberrant or incomplete galactosylation of IgA1 molecules.,function:Glycosyltransferase that generates the core 1 O-glycan Gal-beta1-3GalNAc-alpha1-Ser/Thr (T antigen), which is a precursor for many extended O-glycans in glycoproteins. Plays a central role in many processes, such as angiogenesis, thrombopoiesis and kidney homeostasis development.,online information:Core1 UDP-galactose:N-acetylgalactosamine-alpha-R beta 1,3-galactosyltransferase,pathway:Protein modification; protein

Nanjing BYabscience technology Co.,Ltd



glycosylation.,similarity:Belongs to the glycosyltransferase 31 family. Beta3-Gal-T subfamily.,

Background

The protein encoded by this gene generates the common core 1 O-glycan structure, Gal-beta-1-3GalNAc-R, by the transfer of Gal from UDP-Gal to GalNAc-alpha-1-R. Core 1 is a precursor for many extended mucin-type O-glycans on cell surface and secreted glycoproteins. Studies in mice suggest that this gene plays a key role in thrombopoiesis and kidney homeostasis.[provided by RefSeq, Sep 2010],

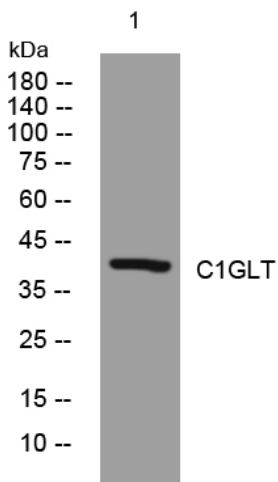
matters needing attention

Avoid repeated freezing and thawing!

Usage suggestions

This product can be used in immunological reaction related experiments. For more information, please consult technical personnel.

Products Images



Western blot analysis of lysates from MCF-7 cells, primary antibody was diluted at 1:1000, 4° over night