



# KCNH4 rabbit pAb

<b>Catalog No</b>	BYab-11472
<b>Isotype</b>	IgG
<b>Reactivity</b>	Human;Rat
<b>Applications</b>	WB;ELISA;IHC
<b>Gene Name</b>	KCNH4
<b>Protein Name</b>	KCNH4
<b>Immunogen</b>	Synthesized peptide derived from human KCNH4.AA range:180-250
<b>Specificity</b>	This antibody detects endogenous levels of KCNH4 at Human/Rat
<b>Formulation</b>	Liquid in PBS containing 50% glycerol, 0.5% BSA and 0.02% sodium azide.
<b>Source</b>	Polyclonal, Rabbit,IgG
<b>Purification</b>	The antibody was affinity-purified from rabbit serum by affinity-chromatography using specific immunogen.
<b>Dilution</b>	WB 1:500-2000;IHC-p 1:50-300; ELISA 2000-20000
<b>Concentration</b>	1 mg/ml
<b>Purity</b>	≥90%
<b>Storage Stability</b>	-20°C/1 year
<b>Synonyms</b>	
<b>Observed Band</b>	
<b>Cell Pathway</b>	Membrane; Multi-pass membrane protein.
<b>Tissue Specificity</b>	Detected only in brain, in particular in the telencephalon. Detected in putamen and caudate nucleus, and at lower levels in cerebral cortex, occipital and hippocampus.
<b>Function</b>	domain:The segment S4 is probably the voltage-sensor and is characterized by a series of positively charged amino acids at every third position.,function:Pore-forming (alpha) subunit of voltage-gated potassium channel. Elicits an outward current, but shows no inactivation. Channel properties may be modulated by cAMP and subunit assembly.,similarity:Belongs to the potassium channel family. H (Eag) subfamily.,similarity:Contains 1 cyclic nucleotide-binding domain.,similarity:Contains 1 PAC (PAS-associated C-terminal) domain.,similarity:Contains 1 PAS (PER-ARNT-SIM) domain.,subunit:The potassium channel is probably composed of a homo- or heterotetrameric complex of pore-forming alpha subunits that can associate with modulating beta subunits.,tissue specificity:Detected only in brain, in particular in

Nanjing BYabscience technology Co.,Ltd



the telencephalon. Detected in putamen and caudate nucleus, and at lower levels in cerebral

**Background**

Voltage-gated potassium (Kv) channels represent the most complex class of voltage-gated ion channels from both functional and structural standpoints. Their diverse functions include regulating neurotransmitter release, heart rate, insulin secretion, neuronal excitability, epithelial electrolyte transport, smooth muscle contraction, and cell volume. This gene encodes a member of the potassium channel, voltage-gated, subfamily H. This member is a pore-forming (alpha) subunit. The gene is brain-specific, and located in the neocortex and the striatum. It may be involved in cellular excitability of restricted neurons in the central nervous system. [provided by RefSeq, Jul 2008],

**matters needing attention**

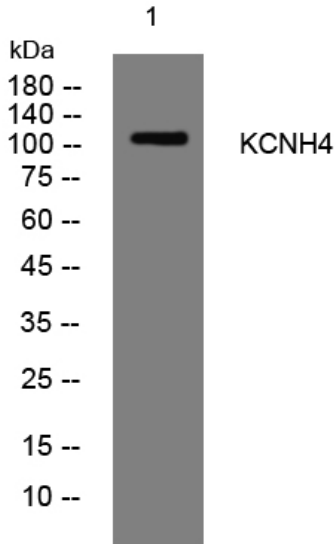
Avoid repeated freezing and thawing!

**Usage suggestions**

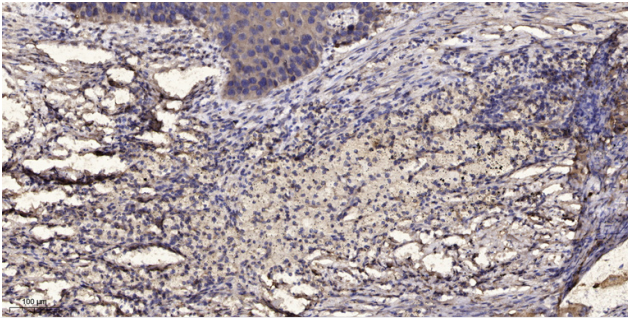
This product can be used in immunological reaction related experiments. For more information, please consult technical personnel.



## Products Images



Western blot analysis of lysates from VEC cells, primary antibody was diluted at 1:1000, 4° over night



Immunohistochemical analysis of paraffin-embedded human Squamous cell carcinoma of lung. 1, Antibody was diluted at 1:200(4° overnight). 2, Tris-EDTA,pH9.0 was used for antigen retrieval. 3,Secondary antibody was diluted at 1:200(room temperature, 45min).