



# ZN131 rabbit pAb

<b>Catalog No</b>	BYab-11470
<b>Isotype</b>	IgG
<b>Reactivity</b>	Human; Mouse
<b>Applications</b>	WB
<b>Gene Name</b>	ZNF131
<b>Protein Name</b>	ZN131
<b>Immunogen</b>	Synthesized peptide derived from human ZN131 AA range: 274-324
<b>Specificity</b>	This antibody detects endogenous levels of ZN131 at Human/Mouse
<b>Formulation</b>	Liquid in PBS containing 50% glycerol, 0.5% BSA and 0.02% sodium azide.
<b>Source</b>	Polyclonal, Rabbit,IgG
<b>Purification</b>	The antibody was affinity-purified from rabbit serum by affinity-chromatography using specific immunogen.
<b>Dilution</b>	WB 1: 500-2000
<b>Concentration</b>	1 mg/ml
<b>Purity</b>	≥90%
<b>Storage Stability</b>	-20°C/1 year
<b>Synonyms</b>	
<b>Observed Band</b>	
<b>Cell Pathway</b>	Nucleus . Sumoylation does not affect nuclear localization.
<b>Tissue Specificity</b>	Predominant expression is found in different brain areas such as the occipital and temporal lobe, the nucleus caudatus, hippocampus, and the cerebellum as well as in testis and thymus.
<b>Function</b>	function:May be involved in transcriptional regulation. Plays a role during development and organogenesis as well as in the function of the adult central nervous system.,similarity:Belongs to the krueppel C2H2-type zinc-finger protein family.,similarity:Contains 1 BTB (POZ) domain.,similarity:Contains 6 C2H2-type zinc fingers.,tissue specificity:Predominant expression is found in diferent brain areas such as the occipital and temporal lobe, the nucleus caudatus, hippocampus, and the cerebellum as well as in testis and thymus.,
<b>Background</b>	

Nanjing BYabscience technology Co.,Ltd



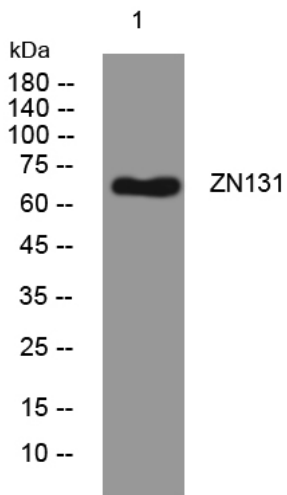
**matters needing attention**

Avoid repeated freezing and thawing!

**Usage suggestions**

This product can be used in immunological reaction related experiments. For more information, please consult technical personnel.

**Products Images**



Western blot analysis of lysates from HpeG2 cells, primary antibody was diluted at 1:1000, 4° over night