



NAA20 rabbit pAb

Catalog No	BYab-11464
Isotype	IgG
Reactivity	Human; Mouse
Applications	WB;ELISA;IHC
Gene Name	NAA20 NAT5
Protein Name	NAA20
Immunogen	Synthesized peptide derived from human NAA20 AA range: 93-143
Specificity	This antibody detects endogenous levels of NAA20 at Human/Mouse
Formulation	Liquid in PBS containing 50% glycerol, 0.5% BSA and 0.02% sodium azide.
Source	Polyclonal, Rabbit,IgG
Purification	The antibody was affinity-purified from rabbit serum by affinity-chromatography using specific immunogen.
Dilution	WB 1:500-2000;IHC-p 1:50-300; ELISA 2000-20000
Concentration	1 mg/ml
Purity	≥90%
Storage Stability	-20°C/1 year
Synonyms	
Observed Band	
Cell Pathway	Cytoplasm . Nucleus .
Tissue Specificity	
Function	function:Seems to be involved in N-acetylation.,similarity:Belongs to the acetyltransferase family. ARD1 subfamily.,similarity:Contains 1 N-acetyltransferase domain.,
Background	NAT5 is a component of N-acetyltransferase complex B (NatB). Human NatB performs cotranslational N(alpha)-terminal acetylation of methionine residues when they are followed by asparagine (Starheim et al., 2008 [PubMed 18570629]).[supplied by OMIM, Apr 2009],
matters needing attention	Avoid repeated freezing and thawing!

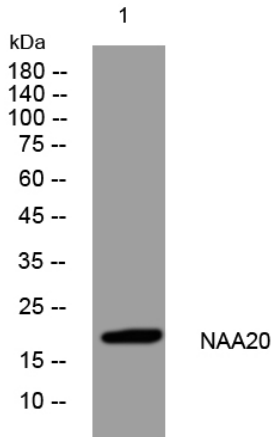
Nanjing BYabscience technology Co.,Ltd



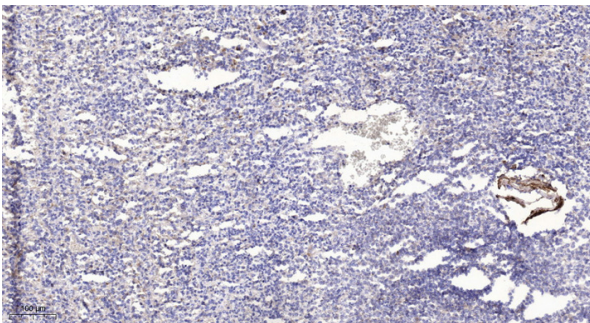
Usage suggestions

This product can be used in immunological reaction related experiments. For more information, please consult technical personnel.

Products Images



Western blot analysis of lysates from 3T3 cells, primary antibody was diluted at 1:1000, 4° over night



Immunohistochemical analysis of paraffin-embedded human spleen. 1, Antibody was diluted at 1:200(4° overnight). 2, Tris-EDTA, pH9.0 was used for antigen retrieval. 3, Secondary antibody was diluted at 1:200(room temperature, 45min).