



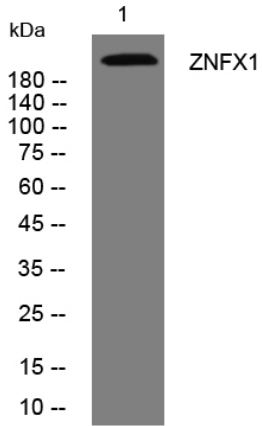
ZNFX1 rabbit pAb

Catalog No	BYab-11459
Isotype	IgG
Reactivity	Human; Mouse
Applications	WB
Gene Name	ZNFX1 KIAA1404
Protein Name	ZNFX1
Immunogen	Synthesized peptide derived from human ZNFX1 AA range: 1657-1707
Specificity	This antibody detects endogenous levels of ZNFX1 at Human/Mouse
Formulation	Liquid in PBS containing 50% glycerol, 0.5% BSA and 0.02% sodium azide.
Source	Polyclonal, Rabbit,IgG
Purification	The antibody was affinity-purified from rabbit serum by affinity-chromatography using specific immunogen.
Dilution	WB 1: 500-2000
Concentration	1 mg/ml
Purity	≥90%
Storage Stability	-20°C/1 year
Synonyms	
Observed Band	
Cell Pathway	Mitochondrion outer membrane . Cytoplasm, Stress granule .
Tissue Specificity	Widely expressed.
Function	sequence caution:Translated as Trp.,similarity:Contains 6 NF-X1-type zinc fingers.,tissue specificity:Widely expressed.,
Background	
matters needing attention	Avoid repeated freezing and thawing!
Usage suggestions	This product can be used in immunological reaction related experiments. For more information, please consult technical personnel.

Nanjing BYabscience technology Co.,Ltd



Products Images



Western blot analysis of lysates from U2OS cells,
primary antibody was diluted at 1:1000, 4° over night