



CHP3 rabbit pAb

Catalog No	BYab-11458
Isotype	IgG
Reactivity	Human; Mouse
Applications	WB
Gene Name	TESC CHP3
Protein Name	CHP3
Immunogen	Synthesized peptide derived from human CHP3 AA range: 20-70
Specificity	This antibody detects endogenous levels of CHP3 at Human/Mouse
Formulation	Liquid in PBS containing 50% glycerol, 0.5% BSA and 0.02% sodium azide.
Source	Polyclonal, Rabbit,IgG
Purification	The antibody was affinity-purified from rabbit serum by affinity-chromatography using specific immunogen.
Dilution	WB 1: 500-2000
Concentration	1 mg/ml
Purity	≥90%
Storage Stability	-20°C/1 year
Synonyms	
Observed Band	
Cell Pathway	Nucleus . Cytoplasm . Membrane ; Lipid-anchor . Cell membrane . Cell projection, lamellipodium . Cell projection, ruffle membrane . Colocalizes with SLC9A1 at the plasma membrane. .
Tissue Specificity	Expressed in mature megakaryocytes and polymorphonuclear granulocytes (at protein level). Abundantly expressed in heart. Also expressed at a lower level in adult testis and salivary gland, and in the placenta.
Function	caution:It is uncertain whether Met-1 or Met-54 is the initiator.,cofactor:Binds calcium.,developmental stage:Strongly up-regulated in K562 cells treated by PMA to promote megakaryocytic differentiation, but not when treated by DMSO to promote granulocytic differentiation or by hemin to promote erythroid differentiation (at protein level).,function:Essential for the coupling of ERK cascade activation with the expression of ETS family genes in megakaryocytic differentiation.,similarity:Contains 1 EF-hand domain.,subunit:Interacts with Sodium/hydrogen exchanger 1 (SLC9A1).,tissue specificity:Abundantly expressed in heart.,

Nanjing BYabscience technology Co.,Ltd



Background

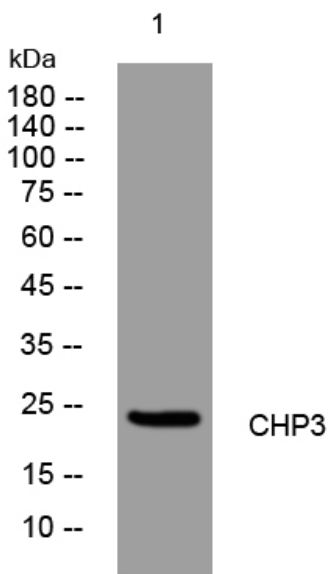
matters needing attention

Avoid repeated freezing and thawing!

Usage suggestions

This product can be used in immunological reaction related experiments. For more information, please consult technical personnel.

Products Images



Western blot analysis of lysates from HpeG2 cells, primary antibody was diluted at 1:1000, 4° over night