



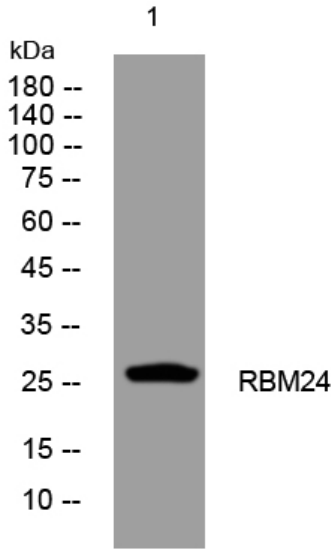
RBM24 rabbit pAb

Catalog No	BYab-11456
Isotype	IgG
Reactivity	Human; Mouse
Applications	WB;IHC
Gene Name	RBM24 RNPC6
Protein Name	RBM24
Immunogen	Synthesized peptide derived from human RBM24 AA range: 48-98
Specificity	This antibody detects endogenous levels of RBM24 at Human/Mouse
Formulation	Liquid in PBS containing 50% glycerol, 0.5% BSA and 0.02% sodium azide.
Source	Polyclonal, Rabbit,IgG
Purification	The antibody was affinity-purified from rabbit serum by affinity-chromatography using specific immunogen.
Dilution	WB 1:500-2000;IHC-p 1:50-300
Concentration	1 mg/ml
Purity	≥90%
Storage Stability	-20°C/1 year
Synonyms	
Observed Band	
Cell Pathway	Nucleus . Cytoplasm .
Tissue Specificity	Expressed in fetal and adult heart and skeletal muscles (PubMed:22345307, PubMed:25313962).
Function	similarity:Contains 1 RRM (RNA recognition motif) domain.,
Background	
matters needing attention	Avoid repeated freezing and thawing!
Usage suggestions	This product can be used in immunological reaction related experiments. For more information, please consult technical personnel.

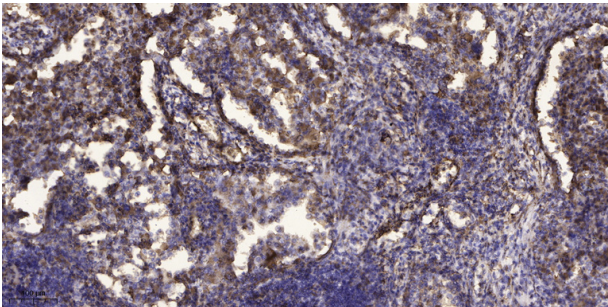
Nanjing BYabscience technology Co.,Ltd



Products Images



Western blot analysis of lysates from 293T cells, primary antibody was diluted at 1:1000, 4° over night



Immunohistochemical analysis of paraffin-embedded human Squamous cell carcinoma of lung. 1, Antibody was diluted at 1:200(4° overnight). 2, Tris-EDTA,pH9.0 was used for antigen retrieval. 3,Secondary antibody was diluted at 1:200(room temperature, 45min).