



# SUSD2 rabbit pAb

<b>Catalog No</b>	BYab-11444
<b>Isotype</b>	IgG
<b>Reactivity</b>	Human; Mouse
<b>Applications</b>	WB;IHC
<b>Gene Name</b>	SUSD2
<b>Protein Name</b>	SUSD2
<b>Immunogen</b>	Synthesized peptide derived from human SUSD2 AA range: 666-716
<b>Specificity</b>	This antibody detects endogenous levels of SUSD2 at Human/Mouse
<b>Formulation</b>	Liquid in PBS containing 50% glycerol, 0.5% BSA and 0.02% sodium azide.
<b>Source</b>	Polyclonal, Rabbit,IgG
<b>Purification</b>	The antibody was affinity-purified from rabbit serum by affinity-chromatography using specific immunogen.
<b>Dilution</b>	WB 1:500-2000;IHC-p 1:50-300
<b>Concentration</b>	1 mg/ml
<b>Purity</b>	≥90%
<b>Storage Stability</b>	-20°C/1 year
<b>Synonyms</b>	
<b>Observed Band</b>	
<b>Cell Pathway</b>	Cell membrane ; Single-pass type I membrane protein . SUSD2 and LGALS1 co-localized in very specific, punctate regions along the cell membrane of breast cancer cells. .
<b>Tissue Specificity</b>	Highly expressed in breast cancer, but shows a restricted expression pattern in normal tissues such as adipose, adrenal gland, kidney, lung, mammary gland, placenta, thyroid, trachea, and uterus (PubMed:23131994). Also expressed in colon; down-regulated in colon cancer tissues (PubMed:25351403).
<b>Function</b>	similarity:Contains 1 AMOP domain.,similarity:Contains 1 SMB (somatomedin-B) domain.,similarity:Contains 1 Sushi (CCP/SCR) domain.,similarity:Contains 1 VWFD domain.,
<b>Background</b>	

Nanjing BYabscience technology Co.,Ltd



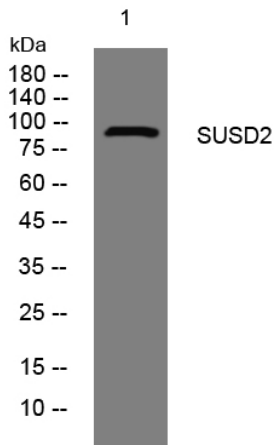
**matters needing attention**

Avoid repeated freezing and thawing!

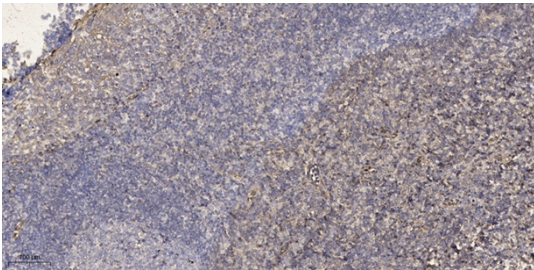
**Usage suggestions**

This product can be used in immunological reaction related experiments. For more information, please consult technical personnel.

## Products Images



Western blot analysis of lysates from SH-SY5Y cells, primary antibody was diluted at 1:1000, 4° over night



Immunohistochemical analysis of paraffin-embedded human tonsil. 1, Antibody was diluted at 1:200(4° overnight). 2, Tris-EDTA, pH9.0 was used for antigen retrieval. 3, Secondary antibody was diluted at 1:200(room temperature, 45min).