



SPAT2 rabbit pAb

Catalog No	BYab-11437
Isotype	IgG
Reactivity	Human;Rat;Mouse;
Applications	WB;ELISA;IHC
Gene Name	SPATA2 KIAA0757 PD1
Protein Name	SPAT2
Immunogen	Synthesized peptide derived from human SPAT2 AA range: 119-169
Specificity	This antibody detects endogenous levels of SPAT2 at Human
Formulation	Liquid in PBS containing 50% glycerol, 0.5% BSA and 0.02% sodium azide.
Source	Polyclonal, Rabbit,IgG
Purification	The antibody was affinity-purified from rabbit serum by affinity-chromatography using specific immunogen.
Dilution	WB 1:500-2000;IHC-p 1:50-300; ELISA 2000-20000
Concentration	1 mg/ml
Purity	≥90%
Storage Stability	-20°C/1 year
Synonyms	
Observed Band	
Cell Pathway	Cytoplasm . Nucleus . Detected in the tubular compartment of the testis and, in the cytoplasm of the Sertoli cells. .
Tissue Specificity	Present at high level in Sertoli cells, but not detected in spermatogenic cells (at protein level) (PubMed:10222154, PubMed:11079456). Low expression in spleen, thymus and prostate (PubMed:10222154).
Function	function:May have a role in the regulation of spermatogenesis.,similarity:Belongs to the SPATA2 family.,tissue specificity:Highly expressed in Sertoli cells, but not detected in spermatogenic cells. Low expression in spleen, thymus and prostate.,
Background	
matters needing attention	Avoid repeated freezing and thawing!

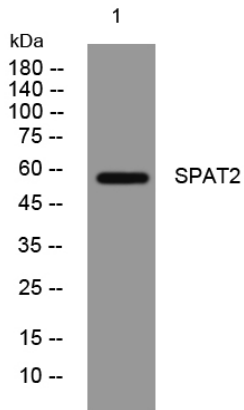
Nanjing BYabscience technology Co.,Ltd



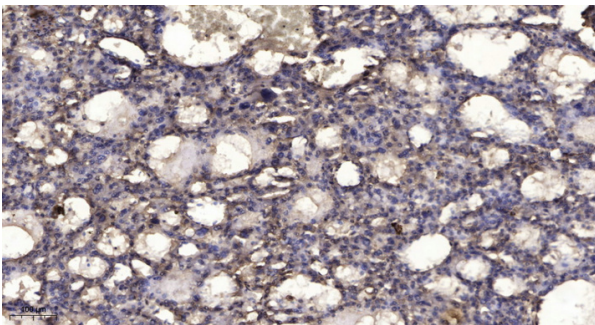
Usage suggestions

This product can be used in immunological reaction related experiments. For more information, please consult technical personnel.

Products Images



Western blot analysis of lysates from MCF-7 cells, primary antibody was diluted at 1:1000, 4° over night



Immunohistochemical analysis of paraffin-embedded human liver cancer. 1, Antibody was diluted at 1:200(4° overnight). 2, Tris-EDTA, pH9.0 was used for antigen retrieval. 3, Secondary antibody was diluted at 1:200(room temperature, 45min).