



FHL5 rabbit pAb

Catalog No	BYab-11429
Isotype	IgG
Reactivity	Human; Mouse;Rat
Applications	WB
Gene Name	FHL5 ACT
Protein Name	FHL5
Immunogen	Synthesized peptide derived from human FHL5 AA range: 129-179
Specificity	This antibody detects endogenous levels of FHL5 at Human/Mouse/Rat
Formulation	Liquid in PBS containing 50% glycerol, 0.5% BSA and 0.02% sodium azide.
Source	Polyclonal, Rabbit,IgG
Purification	The antibody was affinity-purified from rabbit serum by affinity-chromatography using specific immunogen.
Dilution	WB 1: 500-2000
Concentration	1 mg/ml
Purity	≥90%
Storage Stability	-20°C/1 year
Synonyms	
Observed Band	
Cell Pathway	Nucleus . Nuclei of round and elongated spermatids.
Tissue Specificity	Testis-specific (at protein level).
Function	function:May be involved in the regulation of spermatogenesis. Stimulates CREM transcriptional activity in a phosphorylation-independent manner.,similarity:Contains 4 LIM zinc-binding domains.,subcellular location:Nuclei of round and elongated spermatids.,subunit:Interacts with CREM via the third LIM domain.,tissue specificity:Testis-specific (at protein level),.
Background	The protein encoded by this gene is coordinately expressed with activator of cAMP-responsive element modulator (CREM). It is associated with CREM and confers a powerful transcriptional activation function. CREM acts as a transcription factor essential for the differentiation of spermatids into mature spermatozoa. There are multiple polyadenylation sites found in this gene. Polymorphisms in this gene may be associated with susceptibility for migraine

Nanjing BYabscience technology Co.,Ltd



headaches. Alternative splicing results in multiple transcript variants encoding the same protein. [provided by RefSeq, Apr 2016],

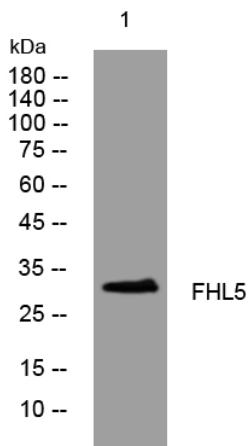
matters needing attention

Avoid repeated freezing and thawing!

Usage suggestions

This product can be used in immunological reaction related experiments. For more information, please consult technical personnel.

Products Images



Western blot analysis of lysates from HEK293 cells, primary antibody was diluted at 1:1000, 4° over night