



PLD6 rabbit pAb

Catalog No	BYab-11425
Isotype	IgG
Reactivity	Human; Mouse
Applications	WB;IHC
Gene Name	PLD6
Protein Name	PLD6
Immunogen	Synthesized peptide derived from human PLD6 AA range: 29-79
Specificity	This antibody detects endogenous levels of PLD6 at Human/Mouse
Formulation	Liquid in PBS containing 50% glycerol, 0.5% BSA and 0.02% sodium azide.
Source	Polyclonal, Rabbit,IgG
Purification	The antibody was affinity-purified from rabbit serum by affinity-chromatography using specific immunogen.
Dilution	WB 1:500-2000;IHC-p 1:50-300
Concentration	1 mg/ml
Purity	≥90%
Storage Stability	-20°C/1 year
Synonyms	
Observed Band	
Cell Pathway	Mitochondrion outer membrane ; Single-pass membrane protein . Golgi apparatus . Localization in the mitochondrial outer membrane is found in different cell types where phospholipase is the predominant activity, however, in pachytene spermatocytes and spermatids of mouse testes where nuclease activity is predominant, localization is restricted to the Golgi, suggesting this enzyme is localized in different subcellular compartments depending on the role (phospholipase or nuclease) it needs to play in each cell type and developmental stage. .
Tissue Specificity	Predominantly expressed in testis and ovary, but not limited to gonads (at protein level) (PubMed:17028579, PubMed:21397847). It is also found in brain, heart, pituitary gland, prostate, pancreas, thyroid, bone marrow, lung and muscle (PubMed:21397847).
Function	catalytic activity:A phosphatidylcholine + H(2)O = choline + a phosphatidate.,similarity:Belongs to the phospholipase D family.,similarity:Contains 1 PLD phosphodiesterase domain.,

Nanjing BYabscience technology Co.,Ltd



Background

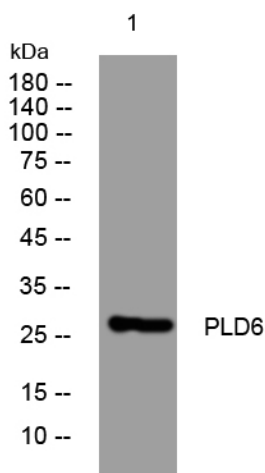
matters needing attention

Avoid repeated freezing and thawing!

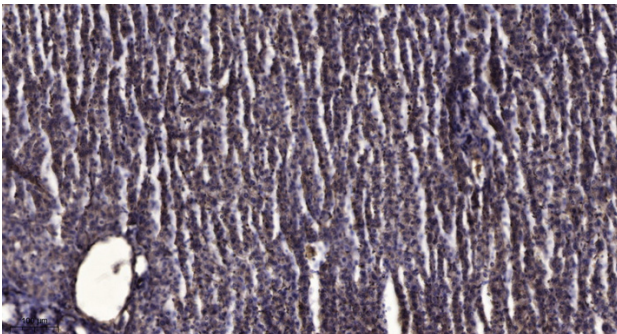
Usage suggestions

This product can be used in immunological reaction related experiments. For more information, please consult technical personnel.

Products Images



Western blot analysis of lysates from A549 cells, primary antibody was diluted at 1:1000, 4° overnight



Immunohistochemical analysis of paraffin-embedded human liver cancer. 1, Antibody was diluted at 1:200(4° overnight). 2, Tris-EDTA, pH9.0 was used for antigen retrieval. 3, Secondary antibody was diluted at 1:200(room temperature, 45min).

Nanjing BYabscience technology Co.,Ltd

网址: www.njbybio.com

官方热线: 025-5229-8998

监督电话: 15950492658