



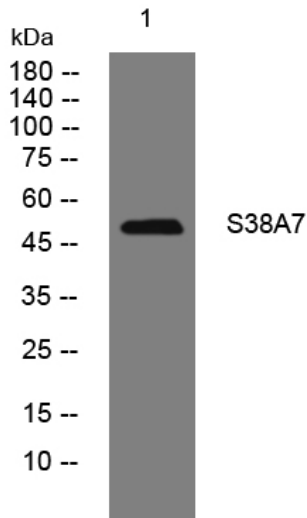
S38A7 rabbit pAb

Catalog No	BYab-11422
Isotype	IgG
Reactivity	Human; Mouse;Rat
Applications	WB
Gene Name	SLC38A7 SNAT7
Protein Name	S38A7
Immunogen	Synthesized peptide derived from human S38A7 AA range: 209-259
Specificity	This antibody detects endogenous levels of S38A7 at Human/Mouse/Rat
Formulation	Liquid in PBS containing 50% glycerol, 0.5% BSA and 0.02% sodium azide.
Source	Polyclonal, Rabbit,IgG
Purification	The antibody was affinity-purified from rabbit serum by affinity-chromatography using specific immunogen.
Dilution	WB 1: 500-2000
Concentration	1 mg/ml
Purity	≥90%
Storage Stability	-20°C/1 year
Synonyms	
Observed Band	
Cell Pathway	Membrane ; Multi-pass membrane protein . In neurons, located in soma and axons. .
Tissue Specificity	
Function	function:Putative sodium-dependent amino acid/proton antiporter.,similarity:Belongs to the amino acid/polyamine transporter 2 family.,
Background	
matters needing attention	Avoid repeated freezing and thawing!
Usage suggestions	This product can be used in immunological reaction related experiments. For more information, please consult technical personnel.

Nanjing BYabscience technology Co.,Ltd



Products Images



Western blot analysis of lysates from CACO2 cells, primary antibody was diluted at 1:1000, 4° over night