



# KCTD3 rabbit pAb

<b>Catalog No</b>	BYab-11415
<b>Isotype</b>	IgG
<b>Reactivity</b>	Human; Mouse
<b>Applications</b>	WB;IHC
<b>Gene Name</b>	KCTD3
<b>Protein Name</b>	KCTD3
<b>Immunogen</b>	Synthesized peptide derived from human KCTD3 AA range: 360-410
<b>Specificity</b>	This antibody detects endogenous levels of KCTD3 at Human/Mouse
<b>Formulation</b>	Liquid in PBS containing 50% glycerol, 0.5% BSA and 0.02% sodium azide.
<b>Source</b>	Polyclonal, Rabbit,IgG
<b>Purification</b>	The antibody was affinity-purified from rabbit serum by affinity-chromatography using specific immunogen.
<b>Dilution</b>	WB 1:500-2000;IHC-p 1:50-300
<b>Concentration</b>	1 mg/ml
<b>Purity</b>	≥90%
<b>Storage Stability</b>	-20°C/1 year
<b>Synonyms</b>	
<b>Observed Band</b>	
<b>Cell Pathway</b>	Cell membrane .
<b>Tissue Specificity</b>	Broadly expressed in normal tissues.
<b>Function</b>	miscellaneous:Reacts with sera from 5-25 per cent of cancer patients but not with sera from normal donors. Seventy per cent of renal cancer patients have antibodies against one or a panel of these antigens.,sequence caution:Contaminating sequence. Potential poly-A sequence.,similarity:Belongs to the KCTD3 family.,similarity:Contains 1 BTB (POZ) domain.,similarity:Contains 5 WD repeats.,tissue specificity:Broadly expressed in normal tissues.,
<b>Background</b>	This gene encodes a member of the potassium channel tetramerization-domain containing (KCTD) protein family. Members of this protein family regulate the biophysical characteristics of ion channels. In mouse, this protein interacts with hyperpolarization-activated cyclic nucleotide-gated channel complex 3 and enhances its cell surface expression and current density. Alternative splicing

Nanjing BYabscience technology Co.,Ltd



results in multiple transcript variants. [provided by RefSeq, Feb 2016],

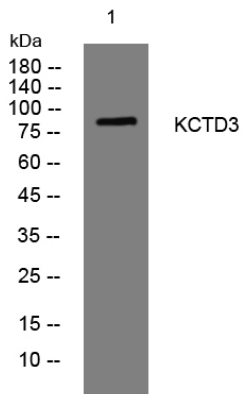
**matters needing attention**

Avoid repeated freezing and thawing!

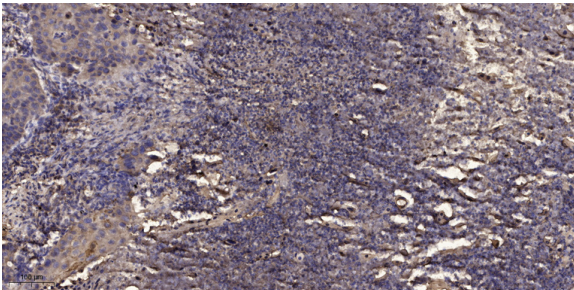
**Usage suggestions**

This product can be used in immunological reaction related experiments. For more information, please consult technical personnel.

**Products Images**



Western blot analysis of lysates from KB cells, primary antibody was diluted at 1:1000, 4° over night



Immunohistochemical analysis of paraffin-embedded human Squamous cell carcinoma of lung. 1, Antibody was diluted at 1:200(4° overnight). 2, Tris-EDTA,pH9.0 was used for antigen retrieval. 3,Secondary antibody was diluted at 1:200(room temperature, 45min).