



ADAT1 rabbit pAb

Catalog No	BYab-11408
Isotype	IgG
Reactivity	Human; Mouse
Applications	WB
Gene Name	ADAT1
Protein Name	ADAT1
Immunogen	Synthesized peptide derived from human ADAT1 AA range: 322-372
Specificity	This antibody detects endogenous levels of ADAT1 at Human/Mouse
Formulation	Liquid in PBS containing 50% glycerol, 0.5% BSA and 0.02% sodium azide.
Source	Polyclonal, Rabbit,IgG
Purification	The antibody was affinity-purified from rabbit serum by affinity-chromatography using specific immunogen.
Dilution	WB 1: 500-2000
Concentration	1 mg/ml
Purity	≥90%
Storage Stability	-20°C/1 year
Synonyms	
Observed Band	
Cell Pathway	
Tissue Specificity	Ubiquitously expressed.
Function	cofactor: Binds 1 inositol hexakisphosphate (IP6) per subunit.,function: Specifically deaminates adenosine-37 to inosine in tRNA-Ala.,similarity: Belongs to the ADAT1 family.,similarity: Contains 1 A to I editase domain.,tissue specificity: Ubiquitously expressed.,
Background	This gene is a member of the ADAR (adenosine deaminase acting on RNA) family. Using site-specific adenosine modification, proteins encoded by these genes participate in the pre-mRNA editing of nuclear transcripts. The protein encoded by this gene, tRNA-specific adenosine deaminase 1, is responsible for the deamination of adenosine 37 to inosine in eukaryotic tRNA. Alternatively spliced transcript variants have been described. [provided by RefSeq, Jul 2010],

Nanjing BYabscience technology Co.,Ltd



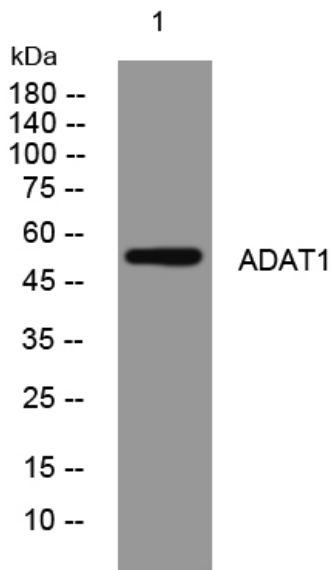
matters needing attention

Avoid repeated freezing and thawing!

Usage suggestions

This product can be used in immunological reaction related experiments. For more information, please consult technical personnel.

Products Images



Western blot analysis of lysates from MCF-7 cells, primary antibody was diluted at 1:1000, 4° over night