



DPEP2 rabbit pAb

Catalog No	BYab-11404
Isotype	IgG
Reactivity	Human; Mouse;Rat
Applications	WB
Gene Name	DPEP2 UNQ284/PRO323
Protein Name	DPEP2
Immunogen	Synthesized peptide derived from human DPEP2 AA range: 94-144
Specificity	This antibody detects endogenous levels of DPEP2 at Human/Mouse/Rat
Formulation	Liquid in PBS containing 50% glycerol, 0.5% BSA and 0.02% sodium azide.
Source	Polyclonal, Rabbit,IgG
Purification	The antibody was affinity-purified from rabbit serum by affinity-chromatography using specific immunogen.
Dilution	WB 1: 500-2000
Concentration	1 mg/ml
Purity	≥90%
Storage Stability	-20°C/1 year
Synonyms	
Observed Band	
Cell Pathway	Membrane ; Lipid-anchor, GPI-anchor .
Tissue Specificity	
Function	catalytic activity:Hydrolysis of dipeptides.,cofactor:Zinc.,enzyme regulation:Inhibited by L-penicillamine.,function:Probable metalloprotease which hydrolyzes leukotriene D4 (LTD4) into leukotriene E4 (LTE4).,similarity:Belongs to the peptidase M19 family.,subunit:Homodimer; disulfide-linked.,
Background	DPEP2 belongs to the membrane-bound dipeptidase (EC 3.4.13.19) family. These enzymes hydrolyze a variety of dipeptides, including leukotriene D4, the beta-lactam ring of some antibiotics, and cystinyl-bis-glycine (cys-bis-gly) formed during glutathione degradation (Habib et al., 2003 [PubMed 12738806]).[supplied by OMIM, Mar 2008],

Nanjing BYabscience technology Co.,Ltd



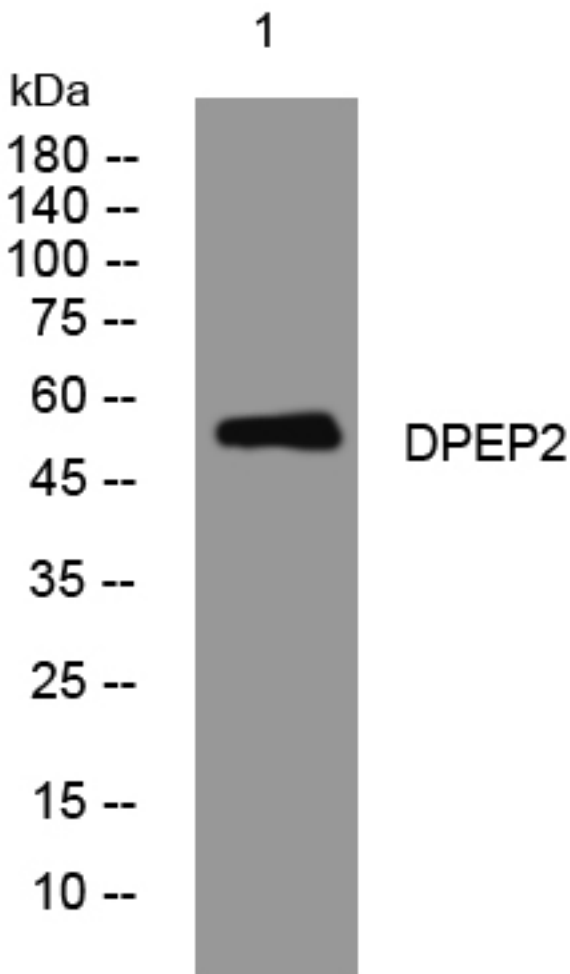
matters needing attention

Avoid repeated freezing and thawing!

Usage suggestions

This product can be used in immunological reaction related experiments. For more information, please consult technical personnel.

Products Images



Western blot analysis of lysates from 3T3 cells, primary antibody was diluted at 1:1000, 4° over night

Nanjing BYabscience technology Co.,Ltd

网址: www.njbybio.com

官方热线: 025-5229-8998

监督电话: 15950492658