



MEX3D rabbit pAb

Catalog No	BYab-11399
Isotype	IgG
Reactivity	Human; Mouse
Applications	WB;IHC
Gene Name	MEX3D KIAA2031 RKHD1 RNF193
Protein Name	MEX3D
Immunogen	Synthesized peptide derived from human MEX3D AA range: 121-171
Specificity	This antibody detects endogenous levels of MEX3D at Human/Mouse
Formulation	Liquid in PBS containing 50% glycerol, 0.5% BSA and 0.02% sodium azide.
Source	Polyclonal, Rabbit,IgG
Purification	The antibody was affinity-purified from rabbit serum by affinity-chromatography using specific immunogen.
Dilution	WB 1:500-2000;IHC-p 1:50-300
Concentration	1 mg/ml
Purity	≥90%
Storage Stability	-20°C/1 year
Synonyms	
Observed Band	
Cell Pathway	Cytoplasm . Nucleus . Predominantly expressed in the cytoplasm and shuttles between the cytoplasm and the nucleus through the CRM1 export pathway. .
Tissue Specificity	Ubiquitously expressed in all the cell lines and tissues tested.
Function	domain: Binds RNA through its KH domains.,function: RNA binding protein, may be involved in post-transcriptional regulatory mechanisms.,PTM: Phosphorylated.,similarity: Contains 1 KH domain.,similarity: Contains 1 RING-type zinc finger.,similarity: Contains 2 KH domains.,subcellular location: Predominantly expressed in the cytoplasm and shuttles between the cytoplasm and the nucleus through the CRM1 export pathway.,tissue specificity: Ubiquitously expressed in all the cell lines and tissues tested.,
Background	

Nanjing BYabscience technology Co.,Ltd



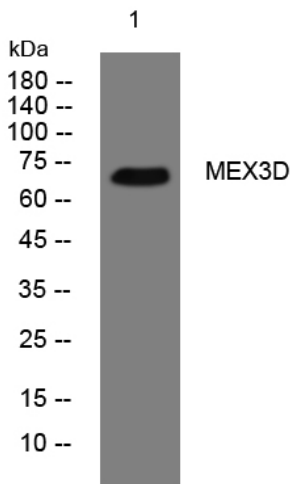
matters needing attention

Avoid repeated freezing and thawing!

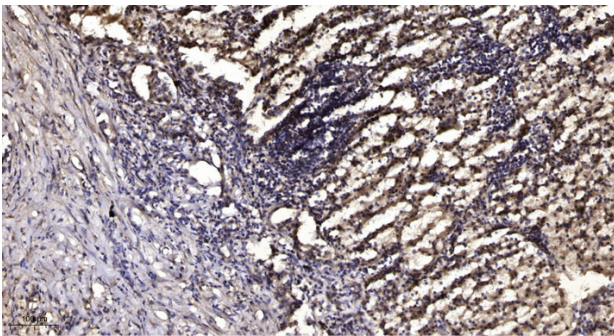
Usage suggestions

This product can be used in immunological reaction related experiments. For more information, please consult technical personnel.

Products Images



Western blot analysis of lysates from 3T3 cells, primary antibody was diluted at 1:1000, 4° over night



Immunohistochemical analysis of paraffin-embedded human Squamous cell carcinoma of lung. 1, Antibody was diluted at 1:200(4° overnight). 2, Tris-EDTA,pH9.0 was used for antigen retrieval. 3,Secondary antibody was diluted at 1:200(room temperature, 45min).