



LOXL4 rabbit pAb

Catalog No	BYab-11391
Isotype	IgG
Reactivity	Human; Mouse
Applications	WB;IHC
Gene Name	LOXL4 LOXC
Protein Name	LOXL4
Immunogen	Synthesized peptide derived from human LOXL4 AA range: 39-89
Specificity	This antibody detects endogenous levels of LOXL4 at Human/Mouse
Formulation	Liquid in PBS containing 50% glycerol, 0.5% BSA and 0.02% sodium azide.
Source	Polyclonal, Rabbit,IgG
Purification	The antibody was affinity-purified from rabbit serum by affinity-chromatography using specific immunogen.
Dilution	WB 1:500-2000;IHC-p 1:50-300
Concentration	1 mg/ml
Purity	≥90%
Storage Stability	-20°C/1 year
Synonyms	
Observed Band	
Cell Pathway	Secreted, extracellular space .
Tissue Specificity	Expressed in many tissues, the highest levels among the tissues studied being in the skeletal muscle, testis and pancreas. Expressed in cartilage.
Function	cofactor:Contains 1 lysine tyrosylquinone.,cofactor:Copper.,function:May modulate the formation of a collagenous extracellular matrix.,PTM:The lysine tyrosylquinone cross-link (LTQ) is generated by condensation of the epsilon-amino group of a lysine with a topaquinone produced by oxidation of tyrosine.,similarity:Belongs to the lysyl oxidase family.,similarity:Contains 4 SRCR domains.,tissue specificity:Expressed in many tissues, the highest levels among the tissues studied being in the skeletal muscle, testis and pancreas. Expressed in cartilage.,
Background	This gene encodes a member of the lysyl oxidase gene family. The prototypic member of the family is essential to the biogenesis of connective tissue, encoding an extracellular copper-dependent amine oxidase that catalyses the first step in

Nanjing BYabscience technology Co.,Ltd



the formation of crosslinks in collagens and elastin. A highly conserved amino acid sequence at the C-terminus end appears to be sufficient for amine oxidase activity, suggesting that each family member may retain this function. The N-terminus is poorly conserved and may impart additional roles in developmental regulation, senescence, tumor suppression, cell growth control, and chemotaxis to each member of the family. [provided by RefSeq, Jul 2008],

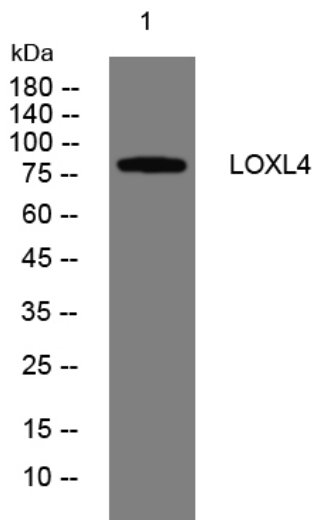
matters needing attention

Avoid repeated freezing and thawing!

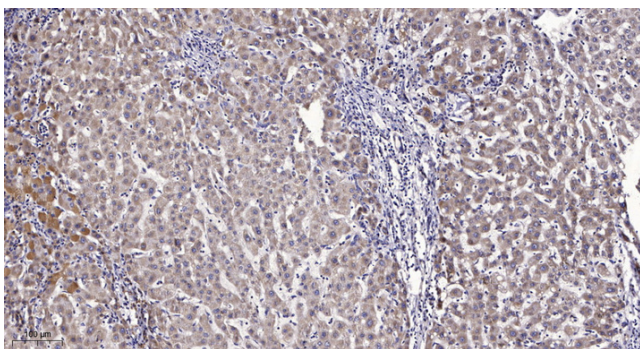
Usage suggestions

This product can be used in immunological reaction related experiments. For more information, please consult technical personnel.

Products Images



Western blot analysis of lysates from U2OS cells, primary antibody was diluted at 1:1000, 4° over night



Immunohistochemical analysis of paraffin-embedded human liver cancer. 1, Antibody was diluted at 1:200(4° overnight). 2, Tris-EDTA, pH9.0 was used for antigen retrieval. 3, Secondary antibody was diluted at 1:200(room temperature, 45min).