



NBPF16 rabbit pAb

Catalog No	BYab-11388
Isotype	IgG
Reactivity	Human;Rat;Mouse;
Applications	WB;IHC
Gene Name	NBPF16
Protein Name	NBPF16
Immunogen	Synthesized peptide derived from human NBPF16 AA range: 49-99
Specificity	This antibody detects endogenous levels of NBPF16 at Human
Formulation	Liquid in PBS containing 50% glycerol, 0.5% BSA and 0.02% sodium azide.
Source	Polyclonal, Rabbit,IgG
Purification	The antibody was affinity-purified from rabbit serum by affinity-chromatography using specific immunogen.
Dilution	WB 1:500-2000;IHC-p 1:50-300
Concentration	1 mg/ml
Purity	≥90%
Storage Stability	-20°C/1 year
Synonyms	
Observed Band	
Cell Pathway	cytoplasm,
Tissue Specificity	
Function	miscellaneous:Encoded by one of the numerous copies of NBPF genes clustered in the p36, p12 and q21 region of the chromosome 1.,similarity:Belongs to the NBPF family.,similarity:Contains 10 NBPF domains.,similarity:Contains 2 NBPF domains.,similarity:Contains 3 NBPF domains.,similarity:Contains 6 NBPF domains.,similarity:Contains 7 NBPF domains.,similarity:Contains 8 NBPF domains.,tissue specificity:Expressed in a neuroblastoma cell line.,tissue specificity:Expressed in spinal cord.,tissue specificity:Expressed in spleen and fetal liver.,tissue specificity:Expressed in the mammary gland.,tissue specificity:Ubiquitously expressed with a higher expression observed in breast and liver. Also expressed in neuroblastoma cell line.,tissue specificity:Widely expressed. The only tissue which shows a weak expression is kidney.,

Nanjing BYabscience technology Co.,Ltd



Background

This gene is a member of the neuroblastoma breakpoint family (NBPF) which consists of dozens of recently duplicated genes primarily located in segmental duplications on human chromosome 1. This gene family has experienced its greatest expansion within the human lineage and has expanded, to a lesser extent, among primates in general. Members of this gene family are characterized by tandemly repeated copies of DUF1220 protein domains. Gene copy number variations in the human chromosomal region 1q21.1, where most DUF1220 domains are located, have been implicated in a number of developmental and neurogenetic diseases such as microcephaly, macrocephaly, autism, schizophrenia, mental retardation, congenital heart disease, neuroblastoma, and congenital kidney and urinary tract anomalies. Altered expression of some gene family members is associated with several types of cancer. This gene family contains numerous pseudogenes. [provided by RefSeq, May 2013],

matters needing attention

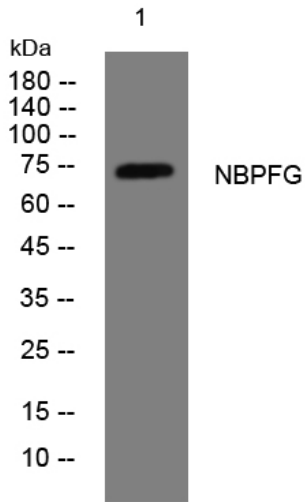
Avoid repeated freezing and thawing!

Usage suggestions

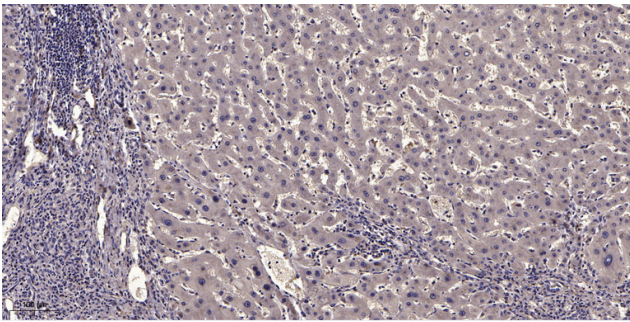
This product can be used in immunological reaction related experiments. For more information, please consult technical personnel.



Products Images



Western blot analysis of lysates from HeLa cells, primary antibody was diluted at 1:1000, 4° over night



Immunohistochemical analysis of paraffin-embedded human liver cancer. 1, Antibody was diluted at 1:200(4° overnight). 2, Tris-EDTA, pH9.0 was used for antigen retrieval. 3, Secondary antibody was diluted at 1:200(room temperature, 45min).