



VAPA rabbit pAb

Catalog No	BYab-11383
Isotype	IgG
Reactivity	Human; Mouse;Rat
Applications	WB
Gene Name	VAPA VAP33
Protein Name	VAPA
Immunogen	Synthesized peptide derived from human VAPA AA range: 34-84
Specificity	This antibody detects endogenous levels of VAPA at Human/Mouse/Rat
Formulation	Liquid in PBS containing 50% glycerol, 0.5% BSA and 0.02% sodium azide.
Source	Polyclonal, Rabbit,IgG
Purification	The antibody was affinity-purified from rabbit serum by affinity-chromatography using specific immunogen.
Dilution	WB 1: 500-2000
Concentration	1 mg/ml
Purity	≥90%
Storage Stability	-20°C/1 year
Synonyms	
Observed Band	
Cell Pathway	Endoplasmic reticulum membrane ; Single-pass type IV membrane protein . Cell membrane ; Single-pass type IV membrane protein . Cell junction, tight junction . Nucleus membrane . Present in the plasma membrane and in intracellular vesicles, together with SNARE proteins. May also associate with the cytoskeleton. Colocalizes with OCLN at the tight junction in polarized epithelial cells. .
Tissue Specificity	Ubiquitous.
Function	function:May play a role in vesicle trafficking.,similarity:Contains 1 MSP domain.,subcellular location:Present in the plasma membrane and in intracellular vesicles, together with SNARE proteins. May also associate with the cytoskeleton. Colocalizes with OCLN at the tight junction in polarized epithelial cells.,subunit:Homodimer, and heterodimer with VAPB. Interacts with VAMP1, VAMP2, STX1A, BET1, SEC22C and with the C-terminal domain of OCLN. Interacts with OSBPL1A.,tissue specificity:Ubiquitous.,

Nanjing BYabscience technology Co.,Ltd



Background

The protein encoded by this gene is a type IV membrane protein. It is present in the plasma membrane and intracellular vesicles. It may also be associated with the cytoskeleton. This protein may function in vesicle trafficking, membrane fusion, protein complex assembly and cell motility. Alternative splicing occurs at this locus and two transcript variants encoding distinct isoforms have been identified. [provided by RefSeq, Jul 2008],

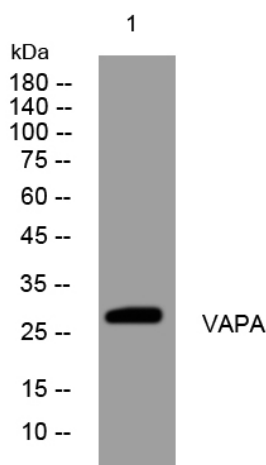
matters needing attention

Avoid repeated freezing and thawing!

Usage suggestions

This product can be used in immunological reaction related experiments. For more information, please consult technical personnel.

Products Images



Western blot analysis of lysates from K562 cells, primary antibody was diluted at 1:1000, 4° over night