



SOLH2 rabbit pAb

| | |
|---------------------------|---|
| Catalog No | BYab-11382 |
| Isotype | IgG |
| Reactivity | Human; Mouse;Rat |
| Applications | WB;IHC |
| Gene Name | SOHLH2 TEB1 |
| Protein Name | SOLH2 |
| Immunogen | Synthesized peptide derived from human SOLH2 AA range: 117-167 |
| Specificity | This antibody detects endogenous levels of SOLH2 at Human/Mouse/Rat |
| Formulation | Liquid in PBS containing 50% glycerol, 0.5% BSA and 0.02% sodium azide. |
| Source | Polyclonal, Rabbit,IgG |
| Purification | The antibody was affinity-purified from rabbit serum by affinity-chromatography using specific immunogen. |
| Dilution | WB 1:500-2000;IHC-p 1:50-300 |
| Concentration | 1 mg/ml |
| Purity | ≥90% |
| Storage Stability | -20°C/1 year |
| Synonyms | |
| Observed Band | |
| Cell Pathway | Nucleus . Cytoplasm . Translocates from the cytoplasm into the nucleus and the translocation is dependent on SOHLH1 expression. . |
| Tissue Specificity | |
| Function | function:Probable transcription factor, which may be involved in spermatogenesis and oogenesis.,similarity:Contains 1 basic helix-loop-helix (bHLH) domain., |
| Background | This gene encodes one of testis-specific transcription factors which are essential for spermatogenesis, oogenesis and folliculogenesis. This gene is located on chromosome 13. The proteins encoded by this gene and another testis-specific transcription factor, SOHLH1, can form heterodimers, in addition to homodimers. There is a read-through locus (GeneID: 100526761) that shares sequence identity with this gene and the upstream CCDC169 (GeneID: 728591). Alternatively spliced transcript variants encoding different isoforms have been found for this gene. [provided by RefSeq, Aug 2013], |

Nanjing BYabscience technology Co.,Ltd



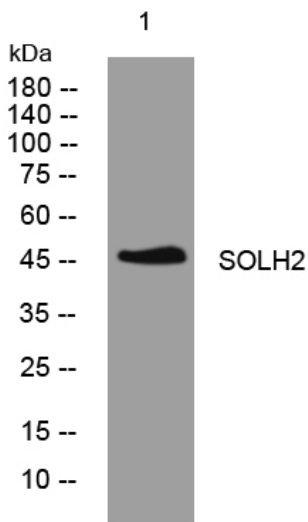
matters needing attention

Avoid repeated freezing and thawing!

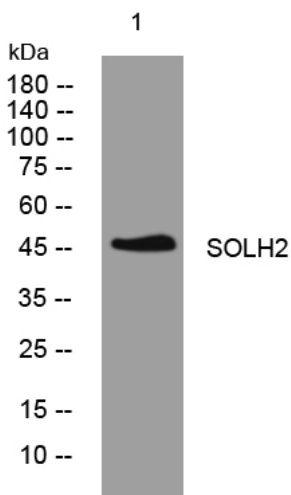
Usage suggestions

This product can be used in immunological reaction related experiments. For more information, please consult technical personnel.

Products Images



Western blot analysis of lysates from AD293 cells, primary antibody was diluted at 1:1000, 4° over night



Immunohistochemical analysis of paraffin-embedded human liver cancer. 1, Antibody was diluted at 1:200(4° overnight). 2, Tris-EDTA, pH9.0 was used for antigen retrieval. 3, Secondary antibody was diluted at 1:200(room temperature, 45min).

Nanjing BYabscience technology Co.,Ltd